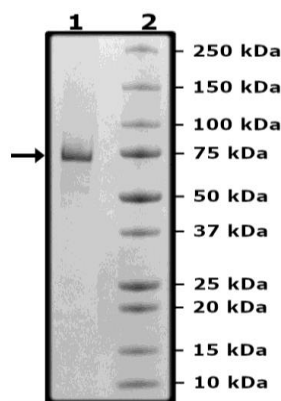


Product Information

Description:	Recombinant human Cot, also known as MAP3K8 (mitogen-activated protein kinase kinase kinase 8), encompassing amino acids 30-397. This construct contains an N-terminal GST followed by a His-Tag (6xHis). The recombinant protein was affinity purified.
Species	Human
Construct:	Cot (GST-His-30-397)
Concentration:	0.18 mg/ml
Expression System:	Sf9
Purity:	≥90%
Format:	Aqueous buffer solution.
Formulated In:	25 mM Tris-HCl, pH 8.0, 100 mM NaCl, 0.05% Tween-20, 50% glycerol, and 3 mM DTT
MW:	72 kDa
Genbank Accession:	NM_005204
Stability:	At least 6 months at -80°C.
Storage:	-80°C
Instructions for Use:	Thaw on ice and gently mix prior to use. DO NOT VORTEX. Perform a quick spin before opening. Aliquot into small volumes and flash freeze for long term storage. Avoid multiple freeze/thaw cycles.
Specific Activity:	47 pmol/min/μg
Assay Conditions:	Activity was measured using Kinase Buffer 1 (BPS Bioscience #79334) with MEK1 substrate (0.2 mg/ml) and 20 μM ATP. Reaction was incubated at 30°C for 45 min. Amount of ATP transferred was calculated using Kinase-Glo reagent.
Applications:	Useful for the study of enzyme kinetics, screening inhibitors, and selectivity profiling.

Quality Control Data

4-20% SDS-PAGE Coomassie Staining



COT Activity

