

Data Sheet

DCAMKL1

Human recombinant, with N-terminal GST-tag

Catalog #: 40047

Lot #: 141210

Conc.: 0.1 mg/ml

Formulated in: 50 mM Tris-HCl, pH 7.5, 150 mM NaCl, 10 mM glutathione, 0.1 mM EDTA, 0.1 mM PMSF, 0.25 mM DTT, 25% glycerol

Stability: At least 6 months at -80°C . Avoid freeze/thaw cycles. Storing diluted enzyme is not recommended, if necessary, use carrier protein (BSA 0.1 – 0.5%).

References:

1. Lin, P.T., *et al.*, *J. of Neurosci.* 2000; **20(24)**: 9152-9161.
2. Sureban, S.M., *et al.*, *Canc. Res.* 2011 **71(6)**: 2328-2338.

Description: Recombinant human DCAMKL1, also known as DCLK1, DCDC3A, DCLK, or KIAA0369, GenBank Accession No. NM_004734, full-length with an N-terminal GST tag and expressed in a baculovirus-infected Sf9 cell expression system.

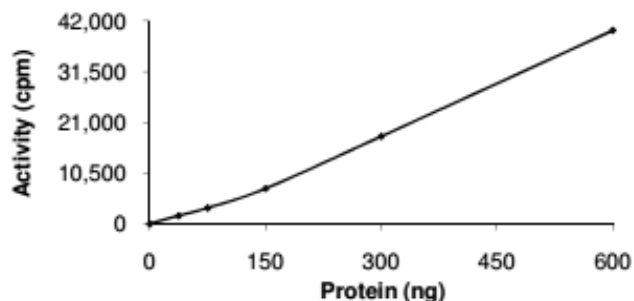
Specific Activity: 3.4 pmol/min/ μg .

Assay conditions: Varying amounts of enzyme were incubated in 5 mM MOPS, pH 7.2, 2.5 mM β -glycero-phosphate, 4 mM MgCl_2 , 2.5 mM MnCl_2 , 1 mM EGTA, 0.4 mM EDTA, 0.01 mM DTT, 0.05 mM ATP, 5 μg of autocaimitide 2 synthetic peptide substrate, and 4 μCi of [^{33}P]-ATP was incubated at 30°C for 15 minutes. Then spot reaction on phosphocellulose paper, fix in 1% phosphoric acid, and assay with a scintillation counter.

Application: Useful for studying enzyme kinetics, screening inhibitors, and selectivity profiling.

Quality Assurance

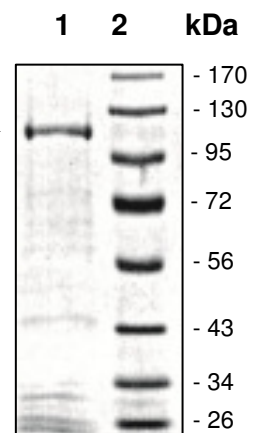
Specific Activity



10% SDS-PAGE
Coomassie staining

Lane 1: → DCAMKL1
Lane 2: Protein Marker

MW: 110 kDa
Purity: $\geq 80\%$



OUR PRODUCTS ARE FOR RESEARCH USE ONLY. NOT FOR DIAGNOSTIC OR THERAPEUTIC USE.

To place your order, please contact us by Phone **1.858.829.3082** Fax **1.858.481.8694**
 Or you can Email us at: info@bpsbioscience.com
 Please visit our website at: www.bpsbioscience.com