

Data Sheet

PLK3, His-Tag

Human, Recombinant, N-terminal His-tag
Catalog #: 40035
Lot #: 140317-G4 **Conc.:** 0.26 mg/ml

Formulated in: 40 mM Tris-HCl pH 8.0, 110 mM NaCl, 2.2 mM KCl, 0.04% Tween-20, 3 mM DTT and 20% glycerol.

Stability: At least 6 months at -80°C . Avoid freeze/thaw cycles.

References:

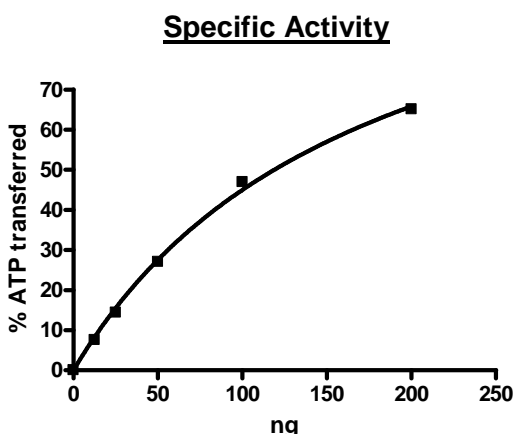
1. Li,Z., et al., J. Biol. Chem. **280** (17), 16843-16850 (2005)
2. Xie,S., et al., Oncogene **23** (21), 3822-3829 (2004)

Description: Human Polo-like kinase 3, or PLK3, GenBank Accession No. NM_004073, a.a. 58-340 with an N-terminal His-tag, expressed in a Baculovirus infected Sf9 cell expression system. MW=37 kDa.

Specific Activity: ≥ 110 pmol/min/ μg .
 Assay Conditions: 40 mM Tris-HCl pH 7.4, 20 mM MgCl_2 , 0.1 mg/mL BSA and 1 mM DTT using 1 mg/ml Casein substrate and 20 μM ATP. Reaction was done at 30°C for 45 min. Amount of ATP transferred was calculated using Kinase-Glo reagent from Promega.

Application: Useful for the study of enzyme kinetics, screening inhibitors, and selectivity profiling.

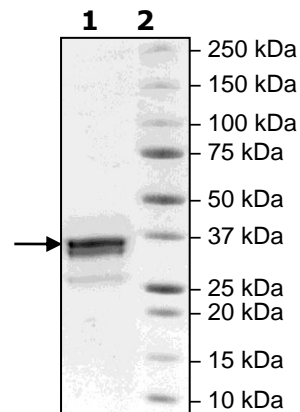
Quality Assurance



**4-20% SDS-PAGE
Coomassie staining**

Lane 1:
2 μg PLK3
Lane 2:
Protein Marker

MW: 37 kDa
Purity: $\geq 68\%$



OUR PRODUCTS ARE FOR RESEARCH USE ONLY. NOT FOR DIAGNOSTIC OR THERAPEUTIC USE.

To place your order, please contact us by Phone **1.858.202.1401** Fax **1.858.481.8694**
 Or you can Email us at: info@bpsbioscience.com
 Please visit our website at: www.bpsbioscience.com



6042 Cornerstone Court West, Suite B
San Diego, CA 92121
Tel: 1.858.202.1401
Fax: 1.858.481.8694
Email: info@bpsbioscience.com

OUR PRODUCTS ARE FOR RESEARCH USE ONLY. NOT FOR DIAGNOSTIC OR THERAPEUTIC USE.

To place your order, please contact us by Phone **1.858.202.1401** Fax **1.858.481.8694**
Or you can Email us at: info@bpsbioscience.com
Please visit our website at: www.bpsbioscience.com