

Data Sheet

Plk2, GST-Tag

Human, Recombinant, N-terminal GST-tag
Catalog #: 40034
Lot #: 130806-G1 **Conc.:** 0.06 mg/ml

Formulated in: 40 mM Tris pH 8, 110 mM NaCl, 2.2 mM KCl, 0.04% Tween, 3 mM DTT, and 20% glycerol.

Stability: At least 6 months at -80°C. Avoid freeze/thaw cycles.

References:

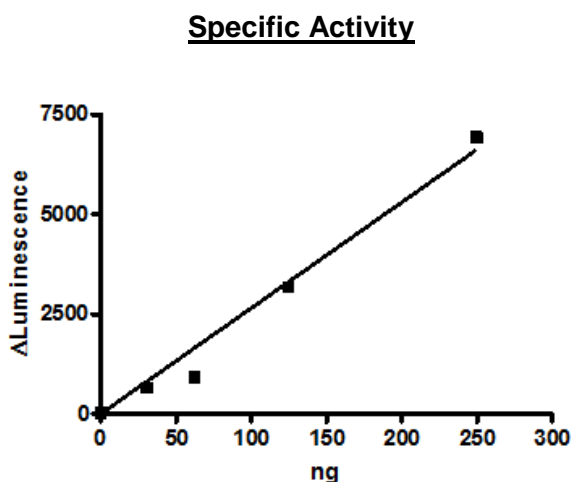
1. Syed, N. *et al.*, *Blood*. 2006 Jan 1;**107(1)**:250-6.
2. Eckerdt, F. *et al.*, *Oncogene*. 2005 Jan 10;**24(2)**:267-76.

Description: Human Plk2 also known as SNK, polo-like kinase 2, GenBank Accession No. NM_006622, a.a. full length, with N-terminal GST-tag, expressed in a baculovirus infected Sf9 cell expression system. MW=104 kDa.

Specific Activity: ≥1.6 pmole/min/μg.
Assay Conditions: 40 mM Tris-HCl pH 7.4, 20 mM MgCl₂, 0.1 mg/mL BSA and 1 mM DTT using 0.5 mg/ml Casein substrate and 10 μM ATP. Reaction was done at 30°C for 45 min. Amount of ATP transferred was calculated using Kinase-Glo reagent from Promega.

Application: Useful for the study of enzyme kinetics, screening inhibitors, and selectivity profiling.

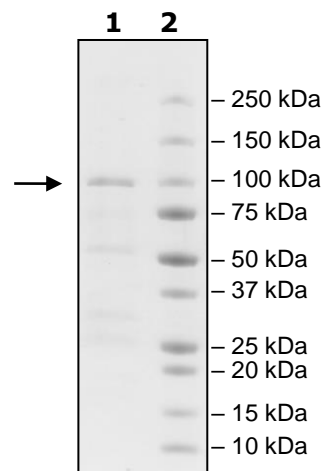
Quality Assurance



**4-20% SDS-PAGE
Coomassie staining**

Lane 1:
1.1 μg PLK2
Lane 2:
Protein Marker

MW: 104 kDa
Purity: ≥51%



OUR PRODUCTS ARE FOR RESEARCH USE ONLY. NOT FOR DIAGNOSTIC OR THERAPEUTIC USE.

To place your order, please contact us by Phone **1.858.202.1401** Fax **1.858.481.8694**
 Or you can Email us at: info@bpsbioscience.com
 Please visit our website at: www.bpsbioscience.com