

## Data Sheet

### STK4(MST1)

Human, recombinant, N-terminal GST-tag

**Catalog #:** 40017

**Lot#:** 101012

**Conc.:** 0.34 mg/ml

**Formulated in:** 45 mM Tris-HCl, pH 8.0,  
 124 mM NaCl, 2.4 mM KCl, 3 mM DTT, 18  
 mM glutathione, and 10% glycerol.

**Stability:** >6 months at -80°C

**References:**

1. Ura, S., *et al.* (2001). *Proc. Natl. Acad. Sci. USA.* **98(18)**:10148-53.
2. Taylor, L.K., *et al.* (1996). *Proc. Natl. Acad. Sci. USA.* **93(19)**:10099-104.
3. Song, H., *et al.* (2010). *Proc. Natl. Acad. Sci. USA.* **107(4)**:1431-6.

**Description:**

Human STK4 (serine/threonine kinase 4), also known as MST-1 (Mammalian STE20-like protein kinase 1) or KRS2, GenBank Accession No. NM\_006282, a.a. 2-488(end), with N-terminal GST-tag, MW=81.5 kDa, expressed in Sf9 insect cells via a baculovirus expression system.

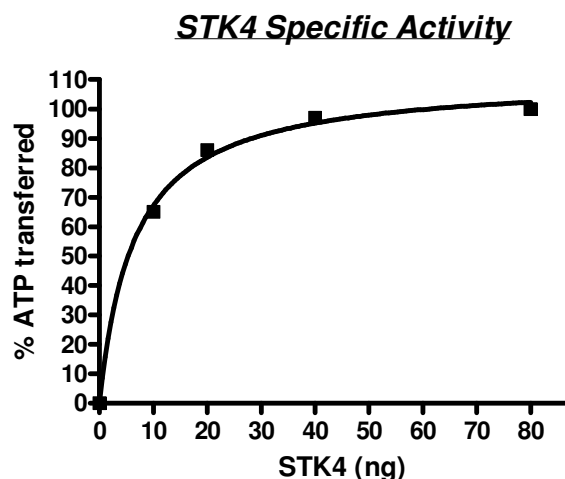
**Specific Activity:** 73 pmole/min/μg.

Enzyme reaction is conducted in a buffer containing 50 mM HEPES (pH 7.5), 10 mM MgCl<sub>2</sub>, 1 mM EGTA, 200 μM ATP, 0.01% Brij-35 and 2 μM substrate (Ser/Thr Peptide 7, Invitrogen) at 30°C for 1 hour.

**Application:**

Useful for the study of enzyme kinetics, screening inhibitors, and selectivity profiling.

### Quality Assurance



**10% SDS-PAGE**

**Coomassie staining**

**Lane 1:**

6 μg STK4

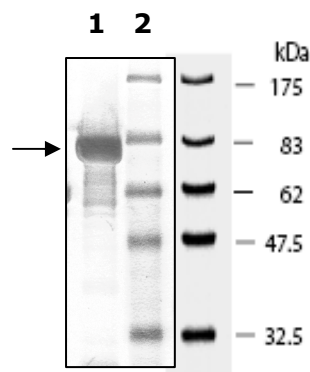
**Lane 2:**

Protein Marker

BioLabs (#P7708L)

**MW:** 56.5 kDa

**Purity:** ≥50%



OUR PRODUCTS ARE FOR RESEARCH USE ONLY. NOT FOR DIAGNOSTIC OR THERAPEUTIC USE.

To place your order, please contact us by Phone **1.858.829.3082** Fax **1.858.481.8694**

Or you can Email us at: [info@bpsbioscience.com](mailto:info@bpsbioscience.com)

Please visit our website at: [www.bpsbioscience.com](http://www.bpsbioscience.com)