

Data Sheet

BRAF (b-RAF)/p50

Human, Recombinant, N-terminal His-tag,
 N-terminal FLAG-tag

Catalog #: 40005

Lot #: 141119-M **Conc.:** 0.07 mg/ml

Formulated in: 40 mM Tris-HCl, pH 8.0,
 110 mM NaCl, 2.2 mM KCl, 0.4% Tween-
 20, 0.04 mg/mL FLAG peptides, 3 mM
 DTT, and 20% glycerol

Stability: At least 6 months at -80°C .
 Avoid freeze/thaw cycles.

References:

1. Sithanandam G., *et al.* (1990).
Oncogene. **5(12)**: 1775–1780.
2. Shepherd C., *et al.* (2010). *Curr. Oncol.*
Rep. **12(3)**:146-152.

Description: Human BRAF (GenBank
 accession # NM_004333), a.a. 432-725 with
 N-terminal His-tag, MW=35 kDa, and p50
 (GenBank accession # NM_007065), a.a. 2-
 378(end) with N-terminal FLAG-tag, MW=45
 kDa, coexpressed in a Baculovirus infected
 Sf9 cell expression system. This protein
 exists in a complex with Cdc37 and p50.

Specific Activity: 10 pmol/min/ μg .
 Assay Conditions: 0.1 mg/ml inactive MEK1
 as a substrate and 5 mM ATP. Reaction was
 done for 30 min at 30°C and the amount of
 ATP was quantified using Kinase-Glo
 reagent (Promega).

Application: Useful for the study of enzyme
 kinetics, screening inhibitors, and selectivity
 profiling.

Quality Assurance

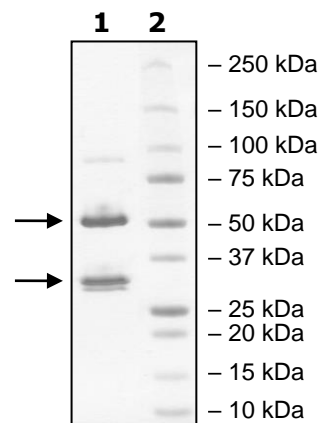
4-20% SDS-PAGE
Coomassie staining

Lane 1:
 2 μg BRAF
 2 μg p50

Lane 2:
 Protein Marker

MW: 35 kDa (BRAF)
 45 kDa (p50)

Purity: 39%



OUR PRODUCTS ARE FOR RESEARCH USE ONLY. NOT FOR DIAGNOSTIC OR THERAPEUTIC
 USE.

To place your order, please contact us by Phone **1.858.829.3082** Fax **1.858.259.5734**

Or you can Email us at: info@bpsbioscience.com

Please visit our website at: www.bpsbioscience.com