

## Data Sheet

### LATS2, GST-Tag

Human, Recombinant, N-terminal GST-tag  
**Catalog #:** 100353  
**Lot #:** 190628-G1      **Conc.:** 0.49 mg/mL

**Formulated in:** 40 mM Tris-HCl, pH 8.0,  
110 mM NaCl, 2.2 mM KCl, 3 mM DTT,  
0.04% Tween20, 20% glycerol.

**Stability:** At least 6 months at  $-80^{\circ}\text{C}$ . Avoid  
freeze/thaw cycles.

#### References:

1. Yunfang, L., *et al.*, *Oncogene*. 2003;  
(22):4398-4405.
2. Murakami, H., *et al.*, *Cancer Research*.  
2011; 71(3):873-883

**Description:** Human Large Tumor  
Suppressor Kinase 2 (LATS2) protein, also  
known as KPM and LATS, GenBank  
Accession No. NM\_014572, a.a 480-  
1088(end), with an N-terminal GST-tag,  
expressed in a Baculovirus infected Sf9 cell  
expression system. MW = 97 kDa.

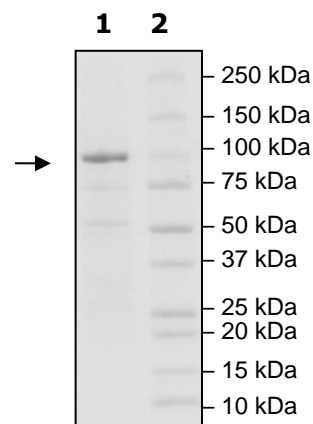
## Quality Assurance

### 4-20% SDS-PAGE Coomassie staining

**Lane 1:**  
LATS2  
**Lane 2:**  
Protein Marker

**Purity:**  $\geq 80\%$

**MW:** 97 kDa



OUR PRODUCTS ARE FOR RESEARCH USE ONLY. NOT FOR DIAGNOSTIC OR THERAPEUTIC USE.

To place your order, please contact us by Phone **1.858.202.1401** Fax **1.858.481.8694**  
Or you can Email us at: [info@bpsbioscience.com](mailto:info@bpsbioscience.com)  
Please visit our website at: [www.bpsbioscience.com](http://www.bpsbioscience.com)