

Data Sheet

Wee1, FLAG-Tag

Human, Recombinant, N-terminal FLAG-Tag

Catalog #: 100154

Lot #: 180904

Conc.: 1.23 mg/mL

Formulated in: 40 mM Tris-HCl, pH 8.0, 110 mM NaCl, 2.2 mM KCl, 100 µg/mL FLAG peptide and 20% Glycerol.

Stability: At least 6 months at -80°C. Avoid freeze/thaw cycles. Protein may be diluted to ≥ 100 µg/ml in PBS + glycerol and stored at -80°C.

References:

1. Parker, L., *et al.*, *Science*. 1992; **257(5078)**:1955.
2. Lundgreen, K, *et al.*, *Cell*. 1991 Mar; **64(6)**:1111-1122.

Description: Human Wee1 protein, also known as Wee1A Kinase, GenBank Accession No. NM_003390, amino acids 215-646 (end), with an N-terminal FLAG-tag, expressed in a Baculovirus infected Sf9 cell expression system. MW = 50 kDa.

Quality Assurance

4-20% SDS-PAGE

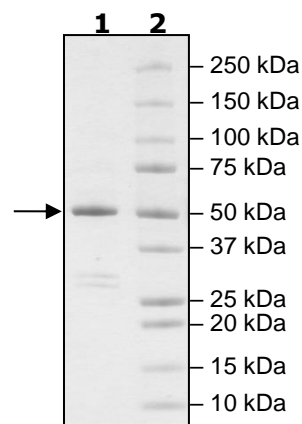
Coomassie Staining

Lane 1:
2 µg WEE1

Lane 2:
Protein Marker

MW: 50 kDa

Purity: ≥86%



OUR PRODUCTS ARE FOR RESEARCH USE ONLY. NOT FOR DIAGNOSTIC OR THERAPEUTIC USE.

To place your order, please contact us by Phone **1.858.829.3082** Fax **1.858.481.8694**

Or you can Email us at: info@bpsbioscience.com

Please visit our website at: www.bpsbioscience.com