

Sildenafil Citrate

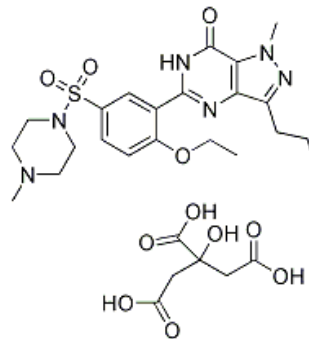
Catalog #: 27105

Lot #: 220422

Size: 25 mg

Structure:

CAS Registry #: 171599-83-0



Purity: >99%

Chemical Formula: $C_{22}H_{30}N_6O_4S \cdot C_6H_8O_7$

Molecular Weight: 666.7

Description: Sildenafil Citrate, a selective inhibitor of cyclic guanosine monophosphate (cGMP)-specific phosphodiesterase type 5 (PDE5), is a well-tolerated and highly effective treatment for erectile dysfunction.

Appearance: White to off-white solid.

Solubility: Insoluble in water; Insoluble in Ethanol; soluble in DMSO (warmed with 50°C water bath) at 100 mg/mL (149.99 mM)

Biological Activity: Sildenafil exhibited high affinity for PDE type 5 and type 6 with inhibition constants (K_i) of ~3.5 and 33 nM, respectively.

Storage/Stability: Store at or below -20°C.

Quality Control: The purity was determined by HPLC analysis.

Reference: Muneer, A. *et al. US Endocrine Disease* (2007); 1:92-95.