

## Data Sheet

### **LAIR1, Avi-His-Tag HiP™ Recombinant**

Human, Recombinant, C-terminal Avi-His-Tag

**Catalog #:** 79483

**Lot #:** 170217-G      **Conc.:** 0.43 mg/ml

**Formulated in:** 8 mM Phosphate, pH 7.4, 110 mM NaCl, 2.2 mM KCl, and 20% glycerol.

**Stability:** At least 6 months at  $-80^{\circ}\text{C}$ . Avoid freeze/thaw cycles. Protein may be diluted to  $\geq 100 \mu\text{g/ml}$  in PBS + glycerol and stored at  $-80^{\circ}\text{C}$ .

**References:**

1. Meyaard, L., *et al.*, *Immunity*. 1997; **7(2)**: 283-290.
2. Lebbink, R., *et al.*, *JEM*. 2006; **203(6)**: 1419.

**Description:** Human LAIR1 also known as Leukocyte-associated immunoglobulin-like receptor 1, CD305, and LAIR-1. GenBank Accession No. NM\_002287, a.a. 22-165, with C-terminal Avi™-His-Tag and expressed in a HEK293 cell expression system. MW = 19 kDa. This protein runs at a higher MW by SDS-PAGE due to glycosylation.

### **Quality Assurance**

**4-20% SDS-PAGE  
Coomassie staining**

**Lane 1:**

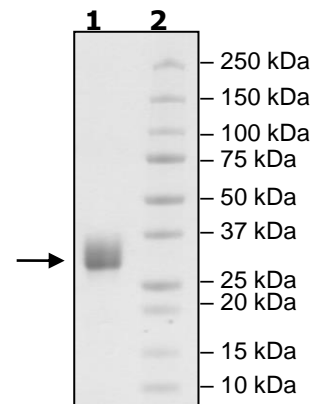
4 $\mu\text{g}$  LAIR1

**Lane 2:**

Protein Marker

**MW:** 19 kDa + glycans

**Purity:**  $\geq 90\%$



OUR PRODUCTS ARE FOR RESEARCH USE ONLY. NOT FOR DIAGNOSTIC OR THERAPEUTIC USE.

To place your order, please contact us by Phone **1.858.202.1401** Fax **1.858.481.8694**

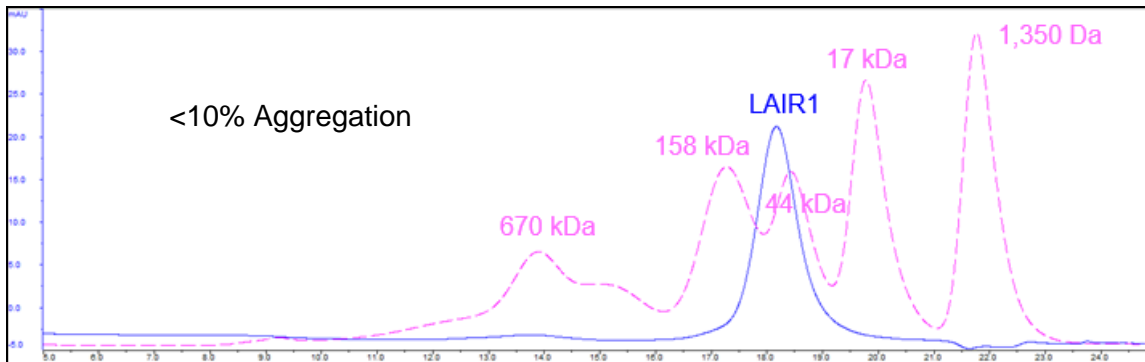
Or you can Email us at: [support@bpsbioscience.com](mailto:support@bpsbioscience.com)

Please visit our website at: [www.bpsbioscience.com](http://www.bpsbioscience.com)



6405 Mira Mesa Blvd Ste 100  
San Diego, CA 92121  
Tel: 1.858.202.1401  
Fax: 1.858.481.8694  
Email: support@bpsbioscience.com

### Gel Filtration Curve



OUR PRODUCTS ARE FOR RESEARCH USE ONLY. NOT FOR DIAGNOSTIC OR THERAPEUTIC USE.

To place your order, please contact us by Phone **1.858.202.1401** Fax **1.858.481.8694**  
Or you can Email us at: [support@bpsbioscience.com](mailto:support@bpsbioscience.com)  
Please visit our website at: [www.bpsbioscience.com](http://www.bpsbioscience.com)