

Data Sheet

CD22, Fc-fusion, Avi-Tag

Human, Recombinant, Fc-fusion protein,
C-terminal Avi-Tag

Catalog #: 79464

Lot #: 180214

Conc.: 0.75 mg/ml

Formulated in: 8 mM Phosphate, pH 7.4,
110 mM NaCl, 2.2 mM KCl, and 20%
glycerol.

Stability: At least 6 months at -80°C . *Avoid
freeze/thaw cycles.*

References:

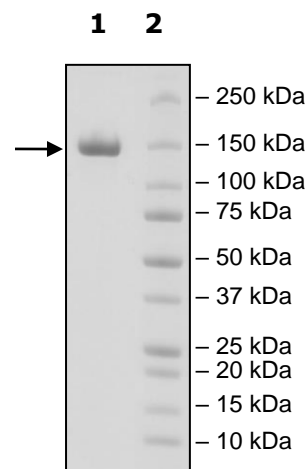
1. Doody, G., *et al.*, *Science*. 1995;
269(5221): 242-244.
2. O'Keefe, T., *et al.*, *Science*. 1996;
274(5288): 798-801.

Description: Human CD22 also known as cluster of differentiation-22, and SIGLEC-2, GenBank Accession No. NM_001771, a.a. 20-687 fused to Fc region (a.a. 100-330) of Human IgG1 with C-terminal Avi-Tag™. and expressed in a HEK293 cell expression system. MW = 104 kDa. This protein runs at a higher MW by SDS-PAGE due to glycosylation.

Quality Assurance

**4-20% SDS-PAGE
Coomassie staining**

Lane 1:
5 μg CD22
Lane 2:
Protein Marker
MW:
104kDa + glycans
Purity: $\geq 90\%$



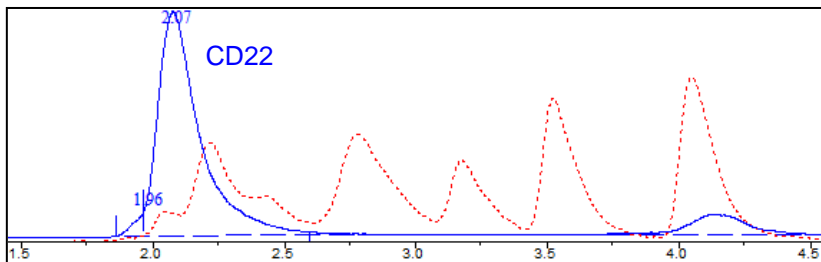
OUR PRODUCTS ARE FOR RESEARCH USE ONLY. NOT FOR DIAGNOSTIC OR THERAPEUTIC USE.

To place your order, please contact us by Phone **1.858.202.1401** Fax **1.858.481.8694**
Or you can Email us at: info@bpsbioscience.com
Please visit our website at: www.bpsbioscience.com



6042 Cornerstone Court W, Ste B
San Diego, CA 92121
Tel: 1.858.202.1401
Fax: 1.858.481.8694
Email: info@bpsbioscience.com

Gel Filtration Curve



<10% aggregation

OUR PRODUCTS ARE FOR RESEARCH USE ONLY. NOT FOR DIAGNOSTIC OR THERAPEUTIC USE.

To place your order, please contact us by Phone **1.858.202.1401** Fax **1.858.481.8694**
Or you can Email us at: info@bpsbioscience.com
Please visit our website at: www.bpsbioscience.com