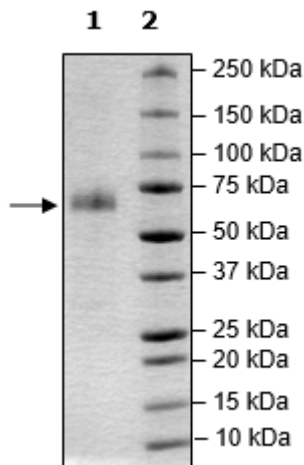


Product Information

Construct:	PD-1 (25-167-Fc(IgG1))-(trFluor-Eu)
Label:	trFluor™ Eu (Ex/Em = 346nm / 617 nm) is a fluorophore with large Stokes shifts and an extremely long emission half-life. It is ideal for applications that require high sensitivity and for time-resolved fluorometry because a delay between excitation and the detection of emission minimizes interference. EU-labeled probes are characterized by a relatively high stability and are often insensitive to quenching. trFluor™ Eu is covalently and randomly conjugated to the target protein.
Concentration:	0.92 mg/ml
Species:	Human
Formulated In:	8 mM phosphate pH 7.4, 110 mM NaCl, 2.2 mM NaCl, 20% glycerol.
Expression System:	HEK293
Format:	Aqueous buffer solution
Stability:	At least 6 months at -80°C. Avoid freeze/thaw cycles.
Storage:	-80°C
Genbank Accession:	NM_005018
MW:	43 kDa + glycans
Purity:	≥90%
Assay Conditions:	Assay was performed according to the PD-1:PD-L1 TR-FRET Assay (BPS Bioscience #72032) with PD-L1 [Biotinylated] titrated from 880 ng/rxn – 0 ng/rxn.
Applications:	Useful for the study of enzyme kinetics, screening inhibitors, and selectivity profiling.

Quality Control Data

4-20% SDS-Page Coomassie Staining



PD-1-Eu: PD-L1 [Biotinylated] Interaction

