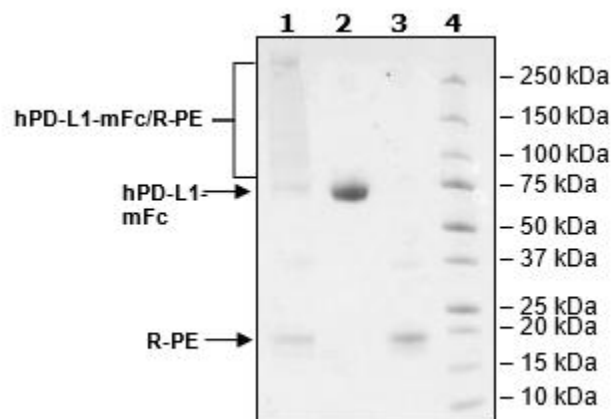


Product Information

| | |
|---------------------------|--|
| Construct: | PD-L1 (19-239-Fc (mIgG2a))-(PE) |
| Label: | R-Phycoerythrin (PE) is an oligomeric protein complex (270 kDa) from red algae that exhibits intensely bright red-orange fluorescence with high quantum yields. The complex consists of six heterodimers, α subunit (18 kDa) and β -subunit (20 kDa), and an additional γ -subunit (34 kDa). PE is covalently attached randomly through lysines on the target protein. |
| Concentration: | 1.23 mg/ml |
| Species: | Human |
| Formulated In: | 8 mM phosphate pH 7.4, 110 mM NaCl, 2.2 mM KCl, 20% glycerol |
| Expression System: | HEK293 |
| Format: | Aqueous buffer solution |
| Stability: | At least 6 months at -80°C. Avoid freeze/thaw cycles. Protect from light. |
| Storage: | -80°C |
| Genbank Accession: | NM_014143 |
| MW: | 53 kDa + PE |
| Purity: | ≥90% |
| Application: | Useful for the study of protein-protein interaction and <i>in vitro</i> and <i>in vivo</i> protein function. |

Quality Control Data

4-20% SDS-Page Coomassie Staining



Lane 1: 8 μ g hPD-L1-mFc / R-PE
Lane 2: 4 μ g hPD-L1-mFc
Lane 3: 4 μ g R-PE
Lane 4: Protein Marker