

## Data Sheet

### **PD-1 (Human), Fc Fusion (Mouse IgG2a)**

Human, Recombinant, C-terminal Fc fusion protein

**Catalog #:** 71997

**Lot #:** 181204

**Conc.:** 0.66 mg/ml

**Formulated in:** 8 mM Na Phosphate pH 7.4, 110 mM NaCl, 2.2 mM KCl and 20% glycerol

**Stability:** At least 6 months at  $-80^{\circ}\text{C}$ . Avoid freeze/thaw cycles. Protein may be diluted to  $\geq 100 \mu\text{g/ml}$  in PBS + glycerol and stored at  $-80^{\circ}\text{C}$ .

**References:**

1. Shinohara, T., *et al.*, *Genomics*. 1994 Oct;**23(3)**:704-6.
2. James, E.S., *et al.*, *Genes Immun*. 2005 Aug;**6(5)**:430-7.

**Description:**

Human secreted programmed cell death 1 (PD-1)-Fc fusion protein, also known as, PDCD1, SLEB2, CD279 and HPD-L, GenBank Accession No. NM\_005018, a.a 25-167, fused at the C-terminus to the Fc portion of Mouse IgG2a, expressed in a HEK293 cell expression system. MW = 43 kDa.

**Application:**

Useful for the study of protein-protein interaction and *in vitro* and *in vivo* protein function.

## **Quality Assurance**

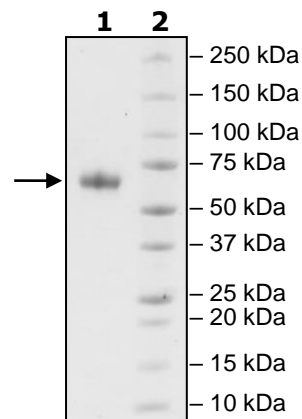
**4-20% SDS-PAGE  
Coomassie staining**

**Lane 1:**  
4  $\mu\text{g}$  hPD-1-mFc

**Lane 2:**  
Protein Marker

**MW:** 43 kDa

**Purity:**  $\geq 90\%$



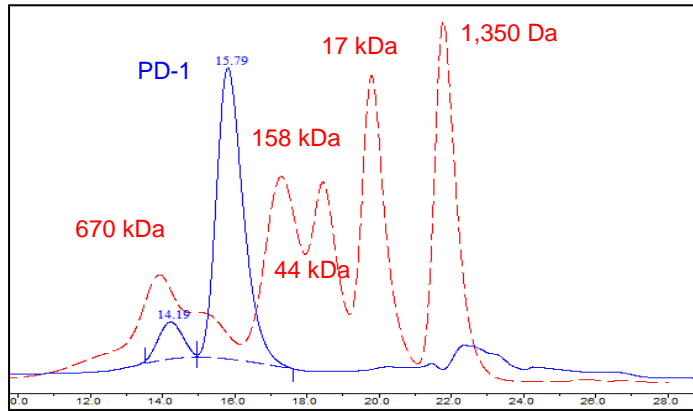
OUR PRODUCTS ARE FOR RESEARCH USE ONLY. NOT FOR DIAGNOSTIC OR THERAPEUTIC USE.

To place your order, please contact us by Phone **1.858.202.1401** Fax **1.858.481.8694**

Or you can Email us at: [info@bpsbioscience.com](mailto:info@bpsbioscience.com)

Please visit our website at: [www.bpsbioscience.com](http://www.bpsbioscience.com)

**Gel Filtration Curve:**



<10% Aggregation

OUR PRODUCTS ARE FOR RESEARCH USE ONLY. NOT FOR DIAGNOSTIC OR THERAPEUTIC USE.

To place your order, please contact us by Phone **1.858.202.1401** Fax **1.858.481.8694**  
Or you can Email us at: [info@bpsbioscience.com](mailto:info@bpsbioscience.com)  
Please visit our website at: [www.bpsbioscience.com](http://www.bpsbioscience.com)