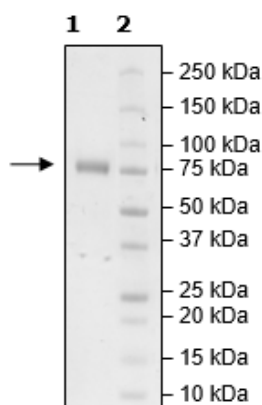


Product Information

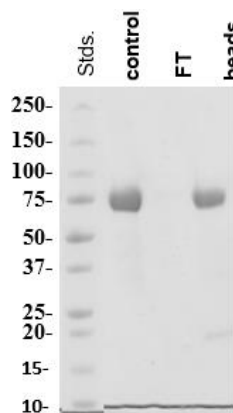
Construct:	KIR2DL2 (22-245-Fc(IgG1)-Avi)-(Biotin)
Label:	This protein is enzymatically biotinylated using Avi-Tag™ technology. Biotinylation is confirmed to be ≥90%.
Concentration:	0.79 mg/ml
Species:	Human
Formulated In:	8 mM Phosphate, pH 7.4, 110 mM NaCl, 2.2 mM KCl, and 20% glycerol
Expression System:	HEK293
Format:	Aqueous buffer solution
Stability:	At least 6 months at -80°C. Avoid freeze/thaw cycles.
Storage:	-80°C
Genbank Accession:	NM_014219
MW:	53 kDa + glycans This protein runs at a higher MW by SDS-PAGE due to glycosylation.
Purity:	≥90%
Aggregation:	<10%

Quality Control Data

4-20% SDS-Page Coomassie Staining



Biotin-Avidin Pulldown



Gel Filtration Trace

