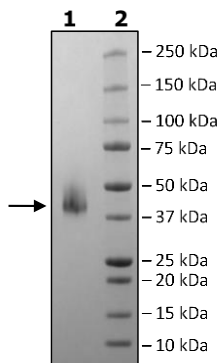


Product Information

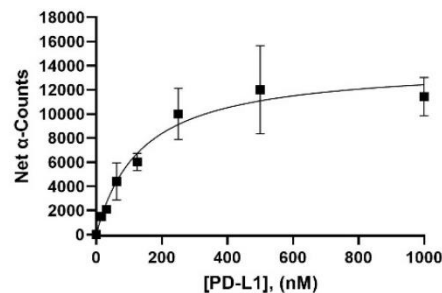
Construct:	PD-L1 (19-239(end)-FLAG-Avi-His)
Concentration:	2.31 mg/ml
Species:	Human
Formulated In:	8 mM phosphate pH 7.4, 110 mM NaCl, 2.2 mM KCl, 20% glycerol
Expression System:	HEK293
Format:	Aqueous buffer solution
Stability:	At least 6 months at -80°C. Avoid freeze/thaw cycles.
Storage:	-80°C
Genbank Accession:	NM_014143
MW:	30 kDa + glycans
Glycosylation:	This protein runs at a higher MW by SDS-PAGE due to glycosylation.
Purity:	≥90%
Aggregation:	<10%
Assay Conditions:	Assay was performed according to the PD-1:PD-L1 Homogeneous Assay Kit (BPS Bioscience #72014) with PD-L1-FLAG titrated from 90 ng/rxn – 0 ng/rxn with PD-1 [Biotinylated] at 44.5 ng/rxn.
Applications:	Useful for the study of enzyme kinetics, screening inhibitors, and selectivity profiling.

Quality Control Data

4-20% SDS-Page Coomassie Staining



PD-1:PD-L1 Activity



Gel Filtration Trace

