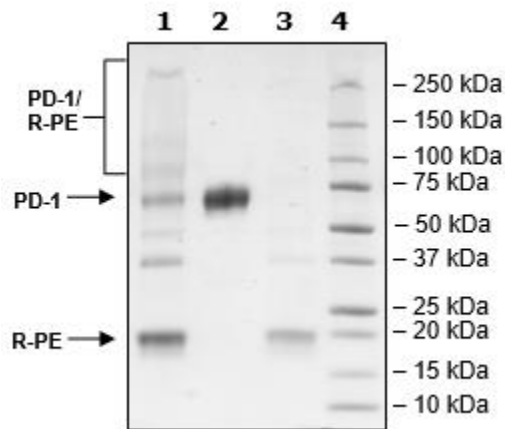


Product Information

**Construct:** mPD-1 (25-167-Fc (IgG1))-(PE)  
**Label:** R-Phycoerythrin (PE) is an oligomeric protein complex (270 kDa) from red algae that exhibits intensely bright red-orange fluorescence with high quantum yields. The complex consists of six heterodimers,  $\alpha$  subunit (18 kDa) and  $\beta$ -subunit (20 kDa), and an additional  $\gamma$ -subunit (34 kDa). PE is covalently attached randomly through lysines on the target protein.  
**Concentration:** 1.39 mg/ml  
**Species:** Mouse  
**Formulated In:** 8 mM phosphate pH 7.4, 110 mM NaCl, 2.2 mM KCl, 20% glycerol  
**Expression System:** HEK293  
**Format:** Aqueous buffer solution  
**Stability:** At least 6 months at -80°C. Avoid freeze/thaw cycles. Protect from light.  
**Storage:** -80°C  
**Genbank Accession:** NM\_008798  
**MW:** 43 kDa + glycans + PE  
**Glycosylation:** This protein runs at a higher M.W. by SDS-PAGE due to glycosylation.  
**Purity:**  $\geq 90\%$   
**Application:** Useful for labeling PD-L1 expressing cells for flow cytometry or immunohistochemistry.

Quality Control Data

4-20% SDS-Page Coomassie Staining



Lane 1: 8  $\mu$ g mPD-1/ R-PE  
 Lane 2: 4  $\mu$ g mPD-1  
 Lane 3: 4  $\mu$ g R-PE  
 Lane 4: Protein Marker

Native PAGE Fluorescence

