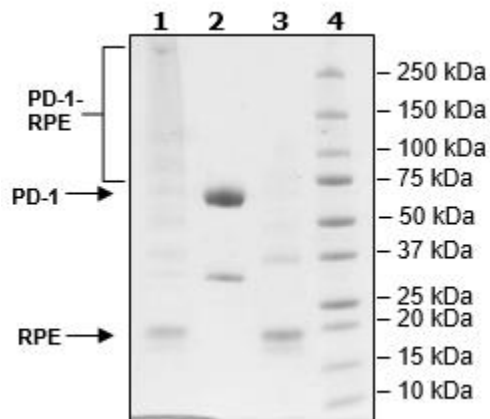


## Product Information

<b>Construct:</b>	PD-1 (25-167-Fc(IgG1))-(PE)
<b>Label:</b>	R-Phycoerythrin (PE) is an oligomeric protein complex (270 kDa) from red algae that exhibits intensely bright red-orange fluorescence with high quantum yields. The complex consists of six heterodimers, $\alpha$ subunit (18 kDa) and $\beta$ -subunit (20 kDa), and an additional $\gamma$ -subunit (34 kDa). PE is covalently attached randomly through lysines on the target protein.
<b>Concentration:</b>	1.89 mg/ml
<b>Species:</b>	Human
<b>Formulated In:</b>	8 mM Na phosphate pH 7.4, 110 mM NaCl, 2.2 mM KCl and 20% glycerol.
<b>Expression System:</b>	HEK293
<b>Format:</b>	Aqueous buffer solution
<b>Stability:</b>	At least 6 months at -80°C. Avoid freeze/thaw cycles. Protect from light.
<b>Storage:</b>	-80°C
<b>Genbank Accession:</b>	NM_005018
<b>MW:</b>	75 kDa + glycans + PE
<b>Glycosylation:</b>	This protein runs at a higher MW by SDS-PAGE due to glycosylation.
<b>Purity:</b>	≥90%

## Quality Control Data

### 4-20% SDS-Page Coomassie Staining



**Lane 1:** 8  $\mu$ g hPD-1-hFc-RPE  
**Lane 2:** 4  $\mu$ g hPD-1-hFc  
**Lane 3:** 4  $\mu$ g R-PE  
**Lane 4:** Protein Marker