

Data Sheet

CTLA4 (CD152), Fc-fusion (IgG1)

Human, Recombinant, Fc fusion protein

Catalog #: 71149-2

Lot #: 180404-G **Conc.:** 0.44 mg/ml

Formulated in: 8 mM phosphate, pH 8.0,
110 mM NaCl, 2.2mM KCl, and 20%
glycerol.

Stability: At least 6 months at -80°C . *Avoid freeze/thaw cycles.*

Endotoxin Level: <0.1 EU/ μg

References:

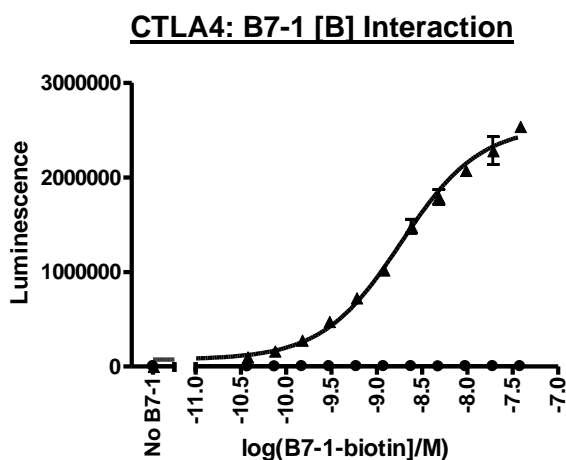
1. Dilek, N., *et al.*, *PLOS ONE*. 2013 Dec. 23: DOI: 10.1371.
2. Leach, D.R., *et al.*, *Science*. 1996; **271(5256)**:1734-1736.

Description: Human secreted CTLA4, Fc fusion protein, also known as Cytotoxic T-lymphocyte-associated protein 4 and CD152. GenBank Accession No. NM_005214, a.a. 36-162 expressed in a HEK293 cell expression system. MW = 40.3 kDa (monomer). This protein runs at a higher MW by SDS-PAGE due to glycosylation.

Assay Conditions: Reaction done according to CTLA4:B7-1[biotin] assay kit (Catalog # 72009) protocol. Buffer is PBS + 0.1% BSA. Blocking buffer is Superblock + 0.05% Tween-20. Coat protein was added ON at 4 deg 100 ng/well. Various concentrations of biotinylated ligand (0-5 ng/ μl , 1.25 ng/ μl is the recommended kit condition) added for 2h at RT. Strep-HRP added for 1h at RT.

Application: Useful for studying protein binding and screening small molecules.

Quality Assurance

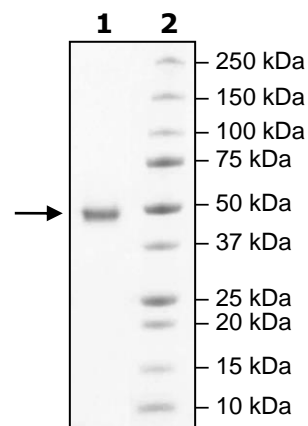


**4-20% SDS-PAGE
Coomassie staining**

Lane 1:
2ug CTLA4
Lane 2:
Protein Marker

MW: 40 kDa+glycans

Purity: $\geq 90\%$



OUR PRODUCTS ARE FOR RESEARCH USE ONLY. NOT FOR DIAGNOSTIC OR THERAPEUTIC USE.

To place your order, please contact us by Phone **1.858.202.1401** Fax **1.858.481.8694**

Or you can Email us at: info@bpsbioscience.com

Please visit our website at: www.bpsbioscience.com