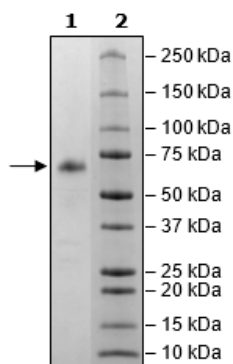


## Product Information

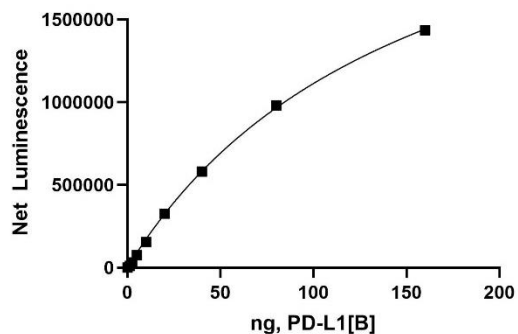
<b>Construct:</b>	PD-1 (25-167-Fc(IgG1))
<b>Concentration:</b>	3.71 mg/ml
<b>Species:</b>	Human
<b>Formulated In:</b>	8 mM phosphate pH 7.4, 110 mM NaCl, 2.2 mM KCl, and 20% glycerol
<b>Expression System:</b>	HEK293
<b>Format:</b>	Aqueous buffer solution
<b>Stability:</b>	At least 6 months at -80°C. Avoid freeze/thaw cycles.
<b>Storage:</b>	-80°C
<b>Genbank Accession:</b>	NM_005018
<b>MW:</b>	43 kDa + glycans
<b>Glycosylation:</b>	This protein runs at a higher MW by SDS-PAGE due to glycosylation.
<b>Purity:</b>	≥90%
<b>Aggregation:</b>	<10%
<b>Assay Conditions:</b>	Assay was performed according to PD-1:PD-L1[Biotinylated] Inhibitor Screening Assay Kit (BPS Bioscience #72003) with various amounts of PD-L1 [Biotin].
<b>Applications:</b>	Useful for the study of enzyme kinetics, screening inhibitors, and selectivity profiling.

## Quality Control Data

4-20% SDS-Page Coomassie Staining



PD-1:PD-L [Biotin] Activity



Biotin-Avidin Pulldown

