

## Data Sheet

### PD-L1 (CD274)

Human, recombinant, C-terminal Fc fusion protein

**Catalog #:** 71104

**Lot #:** 191211

**Conc.:** 1.67 mg/ml

**Formulated in:** 8 mM Phosphate, pH 7.4, 110 mM NaCl, 2.2 mM KCl, and 20% glycerol

**Stability:** At least 6 months at  $-80^{\circ}\text{C}$ . Avoid freeze/thaw cycles.

**References:**

1. Freeman, G.J., *et al.*, *J Exp Med.* 2000 Oct 2;**192(7)**:1027-34.
2. Dong, H., *et al.*, *Nat Med.* 1999 Dec;**5(12)**:1365-9.

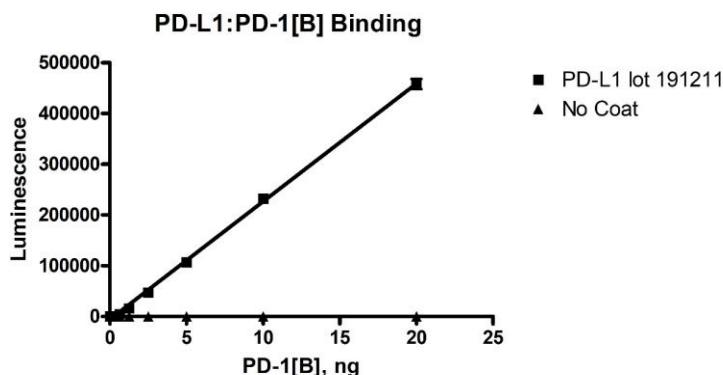
**Description:** Human secreted Programmed Cell Death 1 Ligand 1 (PD-L1)-Fc fusion protein, also known as CD274 and B7 homolog 1 (B7-H1), GenBank Accession No. NM\_014143, a.a. 19-239, fused at the C-terminus to the Fc portion of human IgG1, expressed in a HEK293 cell expression system. MW = 52 kDa.

**Assay Conditions:** Reaction done according to PD-1[B]: PD-L1 assay kit (Catalog # 72005) protocol. Buffer used is PBS + 0.1% BSA. Blocking buffer is Superblock PBS + 0.05% Tween-20. Coat protein (PD-L1) was added overnight at  $4^{\circ}\text{C}$  100 ng/well. Various amounts of biotinylated ligand (PD-1[B]) (0-40 ng) added for 2h at RT. Strep-HRP added for 1h at RT. Luminescence developed with ELISA ECL substrates.

**Application:** Useful for the study of protein-protein interaction and *in vitro* and *in vivo* protein function.

### Quality Assurance

**PD-L1:PD-1[Biotinylated] Binding**

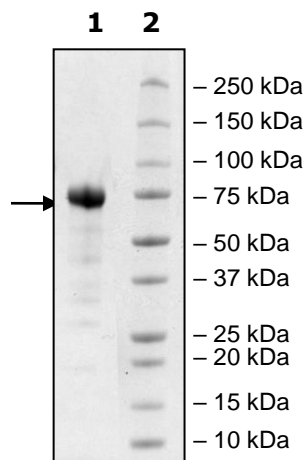


**4-20% SDS-PAGE  
Coomassie staining**

**Lane 1:**  
4 $\mu\text{g}$  PD-L1  
**Lane 2:**  
Protein Marker

**MW:** 52kDa+glycans

**Purity:**  $\geq 90\%$



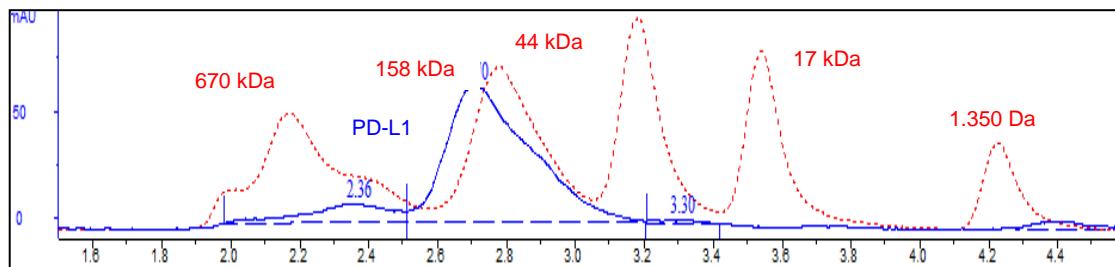
OUR PRODUCTS ARE FOR RESEARCH USE ONLY. NOT FOR DIAGNOSTIC OR THERAPEUTIC USE.

To place your order, please contact us by Phone **1.858.202.1401** Fax **1.858.481.8694**  
 Or you can Email us at: [info@bpsbioscience.com](mailto:info@bpsbioscience.com)  
 Please visit our website at: [www.bpsbioscience.com](http://www.bpsbioscience.com)



6042 Cornerstone Court W, Ste B  
San Diego, CA 92121  
**Tel:** 1.858.202.1401  
**Fax:** 1.858.481.8694  
**Email:** info@bpsbioscience.com

**Gel Filtration Curve:**



<10% Aggregation

OUR PRODUCTS ARE FOR RESEARCH USE ONLY. NOT FOR DIAGNOSTIC OR THERAPEUTIC USE.

To place your order, please contact us by Phone **1.858.202.1401** Fax **1.858.481.8694**  
Or you can Email us at: [info@bpsbioscience.com](mailto:info@bpsbioscience.com)  
Please visit our website at: [www.bpsbioscience.com](http://www.bpsbioscience.com)