

## Data Sheet

### CEACAM1, Avi-His-Tag Recombinant

Human, Recombinant, C-terminal Avi-His-Tag  
**Catalog #:** 70206  
**Lot #:** 161109      **Conc.:** 0.81 mg/ml

**Formulated in:** 8 mM phosphate, pH 7.4, 110 mM NaCl, 2.2 mM KCl, and 20% glycerol.

**Stability:** At least 6 months at -80°C. Avoid freeze/thaw cycles. Protein may be diluted to  $\geq 100 \mu\text{g/ml}$  in PBS + glycerol and stored at -80°C.

**References:**

1. Carvalho, F. *et al.*, *J.E.M.* **206 (10)**, 2179 (2009).
2. Hauck R. *et al.*, *FEBS.* **478 (3)**, 260-266 (2000).

**Description:**

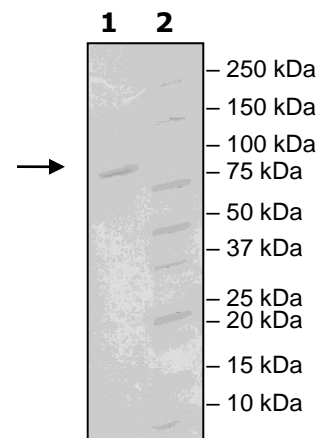
Human CEACAM1, also known as Carcinoembryonic antigen-related cell adhesion molecule 1 or biliary glycoprotein, (GenBank Accession No. NM\_001712), amino-acids 35-428, with C-terminal Avi-His-tag, MW = 47 kDa, expressed in HEK293 cells. This protein runs at a higher M.W. by SDS-PAGE due to glycosylation.

## Quality Assurance

**4-20% SDS-PAGE  
Coomassie staining**

**Lane 1:**  
3 $\mu\text{g}$  CEACAM  
**Lane 2:**  
Protein Marker

**MW:**  
47 kDa + glycans  
**Purity:**  $\geq 90\%$



OUR PRODUCTS ARE FOR RESEARCH USE ONLY. NOT FOR DIAGNOSTIC OR THERAPEUTIC USE.

To place your order, please contact us by Phone **1.858.202.1401** Fax **1.858.481.8694**  
Or you can Email us at: [support@bpsbioscience.com](mailto:support@bpsbioscience.com)  
Please visit our website at: [www.bpsbioscience.com](http://www.bpsbioscience.com)