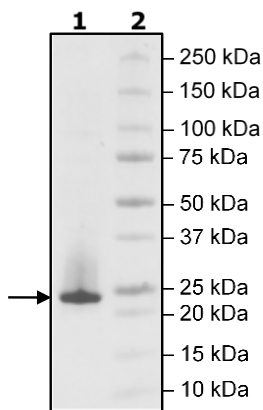


Product Information

Construct:	KRAS (His-2-185)
Concentration:	0.75 mg/ml
Species:	Human
Formulated In:	40 mM Tris-HCl, pH 8.0, 110 mM NaCl, 2.2 mM KCl, 0.04% Tween-20, 20% glycerol, 3 mM DTT, 105 mM imidazole
Expression System:	Sf9
Format:	Aqueous buffer solution
Stability:	At least 6 months at -80°C. Avoid freeze/thaw cycles.
Storage:	-80°C
Genbank Accession:	NM_004985
MW:	22 kDa
Purity:	72%
Assay Conditions:	Intrinsic GTPase reaction of KRAS was conducted at room temperature for 60 min using GTPase-Glo (Promega) reagents with 1 μM GTP.
Applications:	Useful for the study of enzyme kinetics, screening inhibitors, and selectivity profiling.

Quality Control Data

6-20% SDS-Page Coomassie Staining



Intrinsic GTPase Activity

