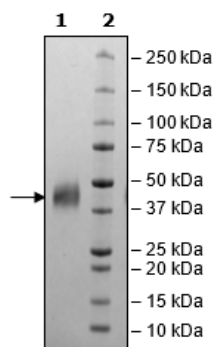


Product Information

Description:	Delta like non-canonical Notch ligand 1 (DLK1), encompassing amino acids 24-303. This construct contains a C-terminal Avi-tag™ followed by a His-tag (6xHis). The recombinant protein was affinity purified. HiP™ indicates a high purity protein (≥90% pure) and less than 10% aggregation as measured by gel filtration.
Background:	Delta like non-canonical Notch ligand 1 (DLK1), also known as Protein delta homolog 1, is a cleavable single-pass transmembrane protein with a restrict pattern of expression (neuroendocrine tissues and progenitor cells). It plays a role in neuroendocrine differentiation and regulates adipose tissue homeostasis. Low levels of the protein are associated with acromegaly. Overexpression of DLK1 is observed in endocrine-related cancers, such as ovarian and adrenocortical cancer, and associated with a poor prognosis. It is considered a promising therapeutic target for such malignancies.
Species:	Human
Construct:	DLK1 (24-303-Avi-His)
Concentration:	2.79 mg/ml
Expression System:	HEK293
Purity:	≥90%
Format:	Aqueous buffer solution.
Formulated In:	8 mM phosphate, pH 7.4, 110 mM NaCl, 2.2 mM KCl, and 20% glycerol
MW:	33 kDa + glycans
Glycosylation:	This protein runs at a higher MW by SDS-PAGE due to glycosylation.
Aggregation:	<10%
Genbank Accession:	NM_003836.6
Stability:	At least 6 months at -80°C.
Storage:	-80°C
Instructions for Use:	Thaw on ice and gently mix prior to use. DO NOT VORTEX. Perform a quick spin before opening. Aliquot into small volumes and flash freeze for long term storage. Avoid multiple freeze/thaw cycles.

Quality Control Data

4-20% SDS-PAGE Coomassie Staining



Quality Control Data

Gel Filtration Curve

