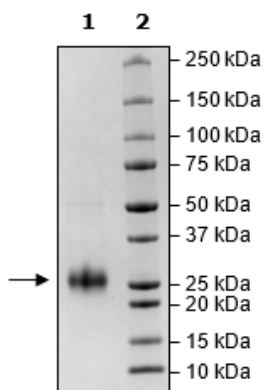


Product Information

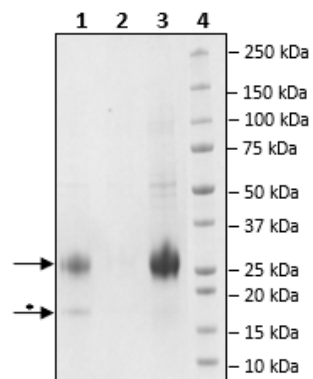
Construct:	CLEC2D (His-Avi-60-191(end))-(Biotin)
Label:	This protein is enzymatically biotinylated using Avi-Tag™ technology. Biotinylation is confirmed to be ≥90%.
Concentration:	0.58 mg/ml
Species:	Human
Formulated In:	8 mM phosphate, pH 7.4, 110 mM NaCl, 2.2 mM KCl, and 20% glycerol
Expression System:	HEK293
Format:	Aqueous buffer solution
Stability:	At least 6 months at -80°C. Avoid freeze/thaw cycles.
Storage:	-80°C
Genbank Accession:	NM013269
MW:	18 kDa + glycans
Glycosylation:	This protein runs at a higher MW by SDS-PAGE due to glycosylation.
Purity:	≥90%

Quality Control Data

4-20% SDS-PAGE Coomassie Staining



Biotin-Avidin Pulldown



1. Beads
2. Flow thru
3. Control
4. Standards

* Avidin from beads.