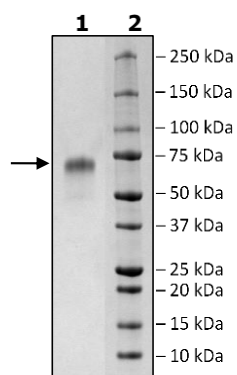


Product Information

Construct:	CD235a (20-91-Fc(IgG1)-Avi)
Concentration:	1.49 mg/ml
Species:	Human
Formulated In:	8 mM phosphate pH 7.4, 110 mM NaCl, 2.2 mM KCl, 20% glycerol
Expression System:	HEK293
Format:	Aqueous buffer solution
Stability:	At least 6 months at -80°C. Avoid freeze/thaw cycles.
Storage:	-80°C
Genbank Accession:	NM_002099
MW:	37 kDa + glycans
Glycosylation:	This protein runs at a higher MW by SDS-PAGE due to glycosylation.
Purity:	≥90%
Aggregation:	<10%

Quality Control Data

4-20% SDS-Page Coomassie Staining



Gel Filtration Trace

