

## Data Sheet

### NKG2A, His-Avi-Tag

Human, Recombinant, N-terminal His-Avi-Tag

**Catalog #:** 100638

**Lot#:** 200211

**Conc.:** 1.65 mg/ml

**Formulated in:** 8 mM phosphate, pH 7.4, 110 mM NaCl, 2.2 mM KCl, and 20% glycerol.

**Stability:** At least 6 months at  $-80^{\circ}\text{C}$ . Avoid freeze/thaw cycles.

**Description:** Human NKG2A, also known as Killer Cell Lectin Like Receptor C1, CD159 Antigen-Like Family Member A and NK Cell Receptor A, GenBank Accession No. NM\_002259.4, a.a. 94-233(end) with an N-terminal His-Avi-Tag<sup>TM</sup>, expressed in a HEK293 cell expression system. MW = 20 kDa. This protein runs at a higher molecular weight due to glycosylation.

#### References:

1. Braud, V.M. *et al.*, *Nature*. 1998; **391**: 795-799.
2. Lee, N. *et al.*, *PNAS*. 1998; **95(9)**: 5199-5204.

---

### Quality Assurance

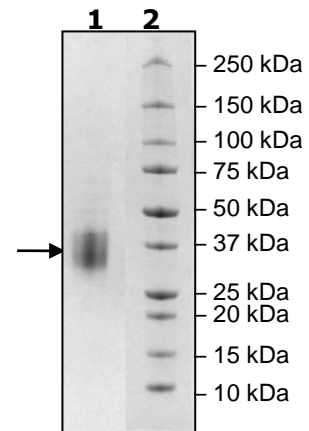
#### 4-20% SDS-PAGE Coomassie staining

**Lane 1:**  
4  $\mu\text{g}$  NKG2A

**Lane 2:**  
Protein Marker

**MW:** 20 kDa+glycans

**Purity:**  $\geq 90\%$



OUR PRODUCTS ARE FOR RESEARCH USE ONLY. NOT FOR DIAGNOSTIC OR THERAPEUTIC USE.

To place your order, please contact us by Phone **1.858.202.1401** Fax **1.858.481.8694**

Or you can Email us at: [info@bpsbioscience.com](mailto:info@bpsbioscience.com)

Please visit our website at: [www.bpsbioscience.com](http://www.bpsbioscience.com)