

Data Sheet

PSGL1 (CD162), Fc Fusion, Avi-tag, Biotin-labeled

Human, Recombinant protein,
C-terminal Fc-Avi-Tag, Biotin-labeled
Catalog #: 100632
Lot #: 200514 **Conc.:** 0.45 mg/ml

Formulated in: 8 mM Phosphate, pH 7.4,
110 mM NaCl, 2.2 mM KCl, and 20%
glycerol.

Stability: At least 6 months at -80°C .
Avoid freeze/thaw cycles.

References:

1. Pouyani, T., *et al.*, *Cell*. 1995; **83**:
333-342.
2. McEver R.P., *et al.*, *J. Clin. Invest.*
1997; **100(3)**: 485-492.

Description: Human P-selectin glycoprotein ligand-1 (PSGL1), also known as SELPLG, CD162 and CLA, GenBank Accession No. NM_003006.4, a.a. 18-320 fused at the C-terminus of the Fc portion of human IgG1, with C-terminal Avi-tag, expressed in a HEK293 cell expression system and enzymatically biotinylated using Avi-tag™ technology. Biotinylation is confirmed to be $\geq 90\%$. MW=60 kDa. This protein runs at a higher M.W. by SDS-PAGE due to glycosylation.

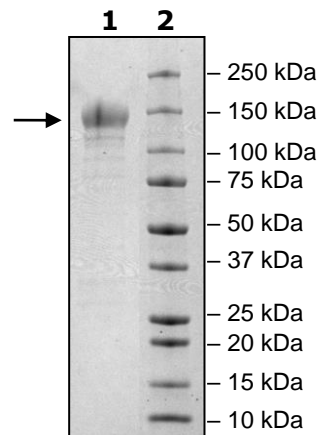
Quality Assurance

4-20% SDS-PAGE Coomassie staining

Lane 1:
3 μg PSGL1
Lane 2:
Protein Marker

MW: 60 kDa

Purity: $\geq 87\%$



OUR PRODUCTS ARE FOR RESEARCH USE ONLY. NOT FOR DIAGNOSTIC OR THERAPEUTIC USE.

To place your order, please contact us by Phone **1.858.202.1401** Fax **1.858.481.8694**
Or you can Email us at: info@bpsbioscience.com
Please visit our website at: www.bpsbioscience.com