

## Data Sheet

### **Siglec6, Fc Fusion, Avi-tag, Biotin-labeled**

Human, Recombinant protein  
C-terminal Fc-Avi-tag, Biotin labeled

**Catalog #:** 100536

**Lot #:** 200130

**Conc.:** 0.88 mg/ml

**Formulated in:** 8 mM Phosphate, pH 7.4,  
110 mM NaCl, 2.2 mM KCl, and 20%  
glycerol.

**Stability:** At least 6 months at  $-80^{\circ}\text{C}$ . Avoid  
freeze/thaw cycles.

**References:**

1. Brinkman-Van der Linden, E.C.M., *et al.*, *Glycobiology*. 2007 Sep 8; **17(9)**:922-931.
2. Patel, N. *et al.*, *JBC*. 1999 Aug 6; **274**:22729-22738.

**Description:** Human secreted Sialic Acid Binding Ig Like Lectin 6 (Siglec6)-Fc fusion protein, also known as CD33 Antigen-Like 1 (CD33L1) and Obesity-Binding Protein 1 (OBBP1), GenBank Accession No. NM\_001245, a.a. 27-347, fused at the C-terminus of the Fc portion of human IgG1, with C-terminal Avi-tag, expressed in a HEK293 cell expression system and enzymatically biotinylated using Avi-tag™ technology. Biotinylation is confirmed to be  $\geq 90\%$ . MW = 64 kDa. This protein runs at a higher molecular weight due to glycosylation.

## **Quality Assurance**

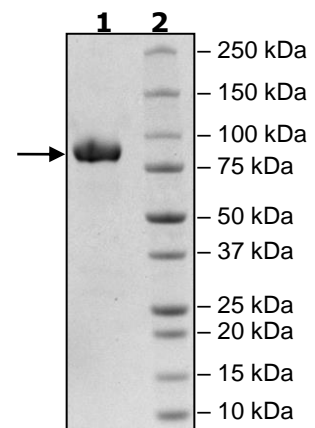
### 4-20% SDS-PAGE Coomassie staining

**Lane 1:**  
2 $\mu\text{g}$  Siglec6 (Biotin)

**Lane 2:**  
Protein Marker

**MW:** 64 kDa

**Purity:**  $\geq 90\%$



OUR PRODUCTS ARE FOR RESEARCH USE ONLY. NOT FOR DIAGNOSTIC OR THERAPEUTIC USE.

To place your order, please contact us by Phone **1.858.202.1401** Fax **1.858.481.8694**

Or you can Email us at: [info@bpsbioscience.com](mailto:info@bpsbioscience.com)

Please visit our website at: [www.bpsbioscience.com](http://www.bpsbioscience.com)