

## Data Sheet

### Siglec5, Fc Fusion, Avi-tag

Human, Recombinant protein,  
C-terminal Fc-Avi-tag

**Catalog #:** 100533

**Lot #:** 191203

**Conc.:** 0.64 mg/ml

**Formulated in:** 8 mM Phosphate, pH 7.4,  
110 mM NaCl, 2.2 mM KCl, and 20%  
glycerol.

**Stability:** At least 6 months at  $-80^{\circ}\text{C}$ . Avoid  
freeze/thaw cycles.

**Description:** Human secreted Sialic Acid Binding Ig Like Lectin 5 (Siglec5)-Fc fusion protein, also known as CD33L2 and OBBP2, GenBank Accession No. NM\_003830, a.a. 17-441, fused at the C-terminus of the Fc portion of human IgG1, with C-terminal Avi-tag, expressed in a HEK293 cell expression system. MW = 76 kDa. This protein runs at a higher MW by SDS-PAGE due to glycosylation.

#### References:

1. Angata, T., *et al.*, *FASEB J.* 2006; **20(12)**:1943-2182.
2. Ali, S.R., *et al.*, *JEM.* 2014; **211(6)**:1231-1242

## Quality Assurance

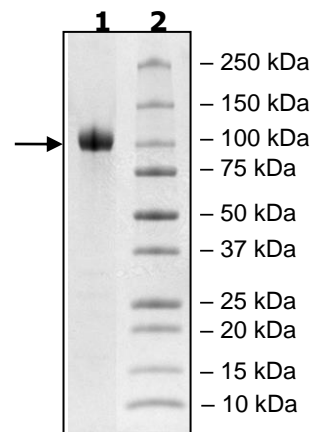
#### 4-20% SDS-PAGE Coomassie staining

**Lane 1:**  
4 $\mu\text{g}$  Siglec5

**Lane 2:**  
Protein Marker

**MW:** 76 kDa + glycans

**Purity:**  $\geq 90\%$



OUR PRODUCTS ARE FOR RESEARCH USE ONLY. NOT FOR DIAGNOSTIC OR THERAPEUTIC USE.

To place your order, please contact us by Phone **1.858.202.1401** Fax **1.858.481.8694**

Or you can Email us at: [info@bpsbioscience.com](mailto:info@bpsbioscience.com)

Please visit our website at: [www.bpsbioscience.com](http://www.bpsbioscience.com)