

## Data Sheet

### **Siglec4, Fc Fusion, Avi-tag, Biotin-labeled**

Human, Recombinant protein  
C-terminal Fc-Avi-tag, Biotin labeled

**Catalog #:** 100532

**Lot #:** 200123-1      **Conc.:** 0.40 mg/ml

**Formulated in:** 8 mM Phosphate, pH 7.4,  
110 mM NaCl, 2.2 mM KCl, and 20%  
glycerol.

**Stability:** At least 6 months at  $-80^{\circ}\text{C}$ . Avoid  
freeze/thaw cycles.

**References:**

1. Sun, J., *et al.*, *Glycobiology*. 2004;  
**14(9)**:851-857.
2. Lehmann, F., *et al.*, *Glycobiology*.  
2004; **14(11)**: 959-968.

**Description:** Human secreted Sialic Acid Binding Ig Like Lectin 4 (Siglec4)-Fc fusion protein, also known as MAG and myelin associated glycoprotein, GenBank Accession No. NM\_002361, a.a. 20-516, fused at the C-terminus of the Fc portion of human IgG1, with C-terminal Avi-tag, expressed in a HEK293 cell expression system and enzymatically biotinylated using Avi-tag™ technology. MW = 83 kDa. This protein runs at a higher MW by SDS-PAGE due to glycosylation.

## **Quality Assurance**

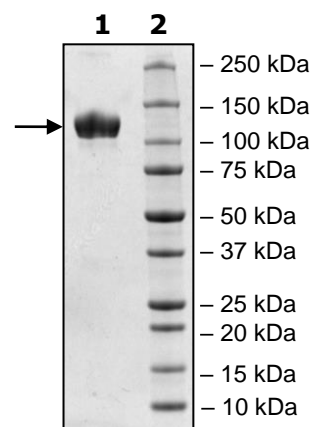
**4-20% SDS-PAGE  
Coomassie staining**

**Lane 1:**  
4 $\mu\text{g}$  Siglec4

**Lane 2:**  
Protein Marker

**MW:** 83 kDa + glycans

**Purity:**  $\geq 90\%$



OUR PRODUCTS ARE FOR RESEARCH USE ONLY. NOT FOR DIAGNOSTIC OR THERAPEUTIC USE.

To place your order, please contact us by Phone **1.858.202.1401** Fax **1.858.481.8694**

Or you can Email us at: [info@bpsbioscience.com](mailto:info@bpsbioscience.com)

Please visit our website at: [www.bpsbioscience.com](http://www.bpsbioscience.com)