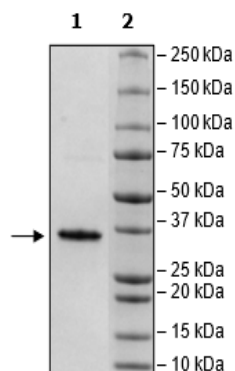


Product Information

Description:	Recombinant human c-RAF (Raf-1 proto-oncogene, serine/threonine kinase (RAF1)), encompassing amino acids 50-140. This construct contains an N-terminal GST-tag followed by a PreScission site. The recombinant protein was affinity purified.
Background:	c-Raf, also known as Raf-1 or proto-oncogen c-Raf, is a member of the Raf (rapidly accelerated fibrosarcoma) kinase family. C-Raf is ubiquitously expressed and seems to be essential for embryogenesis and survival. It plays a role in cell proliferation, differentiation, apoptosis, and senescence. It phosphorylates MEK1/2 (MAP kinase kinase 1/2), resulting in ERK1/2 (extracellular signal-regulated kinase 1/2) activation. It is involved in cancer, by mediating cell proliferation and transformation. C-Raf is an attractive therapeutic target, and agents targeting this protein are currently being investigated in clinical trials for oncologic disorders.
Species:	Human
Construct:	c-RAF (GST-50-140)
Concentration:	0.52 mg/ml
Expression System:	<i>E. coli</i>
Purity:	≥90%
Format:	Aqueous buffer solution.
Formulated In:	40 mM Tris-HCl, pH 8.0, 110 mM NaCl, 2.2 mM KCl, and 20% glycerol
MW:	37 kDa
Genbank Accession:	NM_002880
Stability:	At least 6 months at -80°C.
Storage:	-80°C
Instructions for Use:	Thaw on ice and gently mix prior to use. DO NOT VORTEX. Perform a quick spin before opening. Aliquot into small volumes and flash freeze for long term storage. Avoid multiple freeze/thaw cycles.
Assay Conditions:	Assay was performed according to KRAS(G12C) Coupled Nucleotide Exchange Assay Kit (#78565).
Applications:	Useful for the study of enzyme kinetics, screening inhibitors, and selectivity profiling.

Quality Control Data

4-20% SDS-PAGE Coomassie Staining



KRAS:c-RAF Interaction

