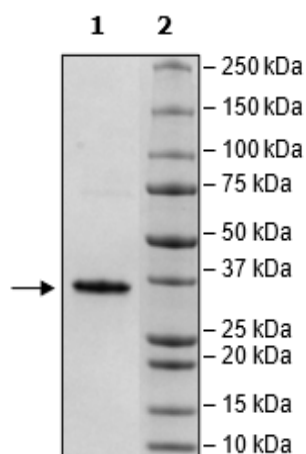


Product Information

Description:	Recombinant Human Raf-1 proto-oncogene, serine/threonine kinase (RAF1), encompassing amino acids 50-140. This construct contains an N-terminal GST-tag followed by a PreScission site to facilitate removal of GST-tag. The recombinant protein was affinity purified.
Species	Human
Construct:	c-RAF (GST-50-140)
Concentration:	0.52 mg/ml
Expression System:	<i>E. coli</i>
Purity:	≥90%
Format:	Aqueous buffer solution.
Formulated In:	40 mM Tris-HCl, pH 8.0, 110 mM NaCl, 2.2 mM KCl, and 20% glycerol
MW:	37 kDa
Genbank Accession:	NM_002880
Stability:	At least 6 months at -80°C.
Storage:	-80°C
Instructions for Use:	Thaw on ice and gently mix prior to use. DO NOT VORTEX. Perform a quick spin before opening. Aliquot into small volumes and flash freeze for long term storage. Avoid multiple freeze/thaw cycles.
Assay Conditions:	Assay was performed according to KRAS(G12C) Coupled Nucleotide Exchange Assay Kit (BPS Bioscience #78565) with various amounts of KRAS (G12C), Isoform A, His-Tag, GppNHP-Loaded Recombinant (BPS Bioscience #100641) or KRAS (G12C), Isoform A, His-Tag, GDP-Loaded Recombinant (BPS Bioscience #100640).
Applications:	Useful for the study of enzyme kinetics, screening inhibitors, and selectivity profiling.

Quality Control Data

4-20% SDS-PAGE Coomassie Staining



KRAS:RBD-c-RAF Interaction

