

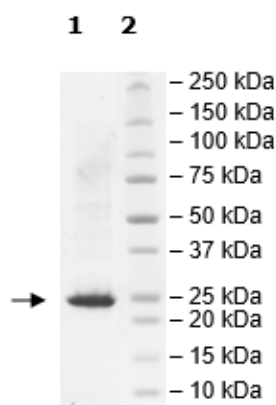
# KRAS (G13D), Isoform B, His-Tag

## Product Information

<b>Construct:</b>	KRAS (G13D) (His-2-185)
<b>Mutation:</b>	G13D
<b>Concentration:</b>	0.36 mg/ml
<b>Species:</b>	Human
<b>Formulated In:</b>	40 mM Tris-HCl, pH 8.0, 110 mM NaCl, 2.2 mM KCl, 0.04% Tween20, 20% glycerol, 3mM DTT, 180 mM Imidazole
<b>Expression System:</b>	Sf9
<b>Format:</b>	Aqueous buffer solution
<b>Stability:</b>	At least 6 months at -80°C. Avoid freeze/thaw cycles.
<b>Storage:</b>	-80°C
<b>Genbank Accession:</b>	NM_004985
<b>MW:</b>	22 kDa
<b>Purity:</b>	≥90%
<b>Assay Conditions:</b>	Intrinsic GTPase reaction of KRAS (G13D) was conducted at room temperature for 60 min using GTPase-Glo (Promega) reagents with 1 μM GTP.
<b>Applications:</b>	Useful for the study of enzyme kinetics, screening inhibitors, and selectivity profiling.

## Quality Control Data

### 6-20% SDS-Page Coomassie Staining



### Intrinsic GTPase Activity

