

## Data Sheet

### EpCAM, Avi-His-Tag, Biotin-Labeled Recombinant

Human, recombinant, C-terminal Avi-His-tag,  
Biotin-labeled

**Catalog #:** 100462

**Lot #:** 190801-1

**Conc.:** 0.93 mg/ml

**Formulated in:** 8 mM phosphate, pH 7.4,  
110 mM NaCl, 2.2 mM KCl, and 20%  
glycerol.

**Stability:** At least 6 months at  $-80^{\circ}\text{C}$ . Avoid  
freeze/thaw cycles.

**References:**

1. Went, P.T.H, *et al.* 2004. *Human Pathology*. **35(1)**: 122-128
2. Maetzel, D., *et al.* 2009. *Nat. Cell. Bio.* **11**: 162-171.

**Description:** Human recombinant Epithelial Cell Adhesion Molecule (EpCAM) also known as Tumor-Associated Calcium Signal Transducer 1, Cell Surface Glycoprotein Trop-1, and MIC18, GenBank Accession No. NM\_178135, a.a 24-265, with a C-terminal Avi-His-Tag, expressed in a HEK293 cell expression system and enzymatically biotin-labeled using Avi-tag™ technology. Biotinylation is confirmed to be  $\geq 90\%$ . MW=31 kDa. This protein runs at a higher MW by SDS-PAGE due to glycosylation.

### Quality Assurance

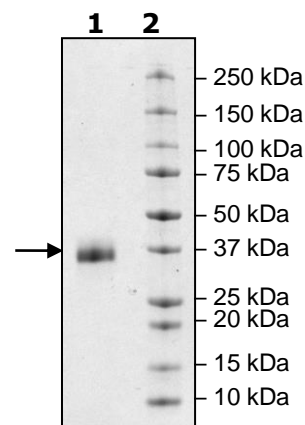
**4-20% SDS-PAGE  
Coomassie staining**

**Lane 1:**  
3  $\mu\text{g}$  EpCAM

**Lane 2:**  
Protein Marker

**MW:** 31 kDa+glycans

**Purity:**  $\geq 90\%$



OUR PRODUCTS ARE FOR RESEARCH USE ONLY. NOT FOR DIAGNOSTIC OR THERAPEUTIC USE.

To place your order, please contact us by Phone **1.858.202.1401** Fax **1.858.481.8694**

Or you can Email us at: [support@bpsbioscience.com](mailto:support@bpsbioscience.com)

Please visit our website at: [www.bpsbioscience.com](http://www.bpsbioscience.com)