

Data Sheet

PD-L1

Human, recombinant protein

Catalog #: 100443

Lot #: 190729-G1

Conc.: 1.73 mg/ml

Formulated in: 25 mM Tris-HCl pH 7.4, 150 mM NaCl, 1 mM EDTA.

Description: Human secreted Programmed Cell Death 1 Ligand 1 (PD-L1) protein, also known as CD274, PDCD1L1, and B7 homolog 1 (B7-H1), GenBank Accession No. NM_014143, a.a. 19-239, expressed in an *E. coli* expression system. MW = 25 kDa.

Stability: At least 6 months at -80°C . Avoid freeze/thaw cycles.

References:

1. Freeman, G.J., *et al.*, *J Exp Med.* 2000 Oct 2;**192(7)**:1027-34.
2. Dong, H., *et al.*, *Nat Med.* 1999 Dec;**5(12)**:1365-9.

Quality Assurance

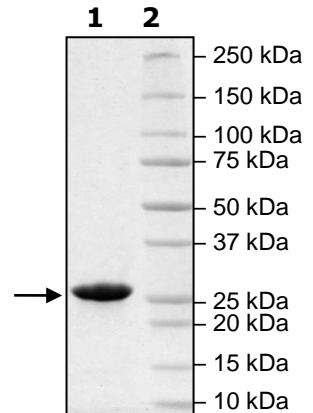
4-20% SDS-PAGE Coomassie staining

Lane 1:
3 μg PD-L1

Lane 2:
Protein Marker

MW: 25 kDa

Purity: >90%



OUR PRODUCTS ARE FOR RESEARCH USE ONLY. NOT FOR DIAGNOSTIC OR THERAPEUTIC USE.

To place your order, please contact us by Phone **1.858.202.1401** Fax **1.858.481.8694**
Or you can Email us at: info@bpsbioscience.com
Please visit our website at: www.bpsbioscience.com