

## Data Sheet

### TET2, FLAG-Tag, His-Tag

Human recombinant, N-terminal FLAG-tag,  
C-terminal His-tag

**Catalog #:** 100408

**Lot #:** 200205-1

**Conc:** 0.37 mg/ml

**Formulated in:** 40 mM Tris-HCl, pH 8.0, 110 mM NaCl, 2.2 mM KCl, 0.04% Tween-20, 3 mM DTT, 20% Glycerol and 100 µg/mL FLAG peptide.

**Stability:** At least 6 months at -80°C. Avoid freeze/thaw cycles.

#### References:

1. Myunggon, K., *et al.*, *Nature*. 2013;**497**: 122-126.
2. Shinsuke, I, *et al.*, *Nature*. 2010; **466**: 1129-1133.

**Description:** Human TET2, also known as Ten-eleven translocation 2 protein, and methylcytosine dioxygenase TET2, GenBank Accession #NM\_001127208, a.a. 916-2002(end) with N-terminal FLAG-tag and C-terminal His-tag, expressed in a Baculovirus infected Sf9 cell expression system. MW = 126 kDa.

### Quality Assurance

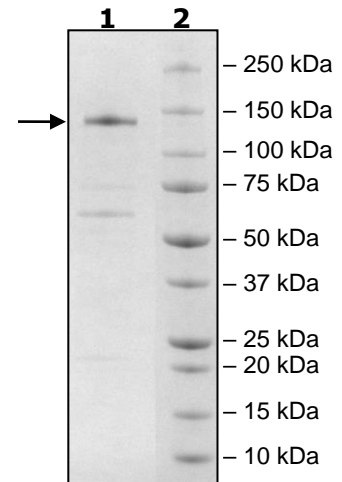
**4-20% SDS-PAGE  
Coomassie staining**

**Lane 1:**  
3 µg TET2

**Lane 2:**  
Protein Marker

**MW:** 126 kDa

**Purity:** 74%



OUR PRODUCTS ARE FOR RESEARCH USE ONLY. NOT FOR DIAGNOSTIC OR THERAPEUTIC USE.

To place your order, please contact us by Phone **1.858.202.1401** Fax **1.858.481.8694**

Or you can Email us at: [info@bpsbioscience.com](mailto:info@bpsbioscience.com)

Please visit our website at: [www.bpsbioscience.com](http://www.bpsbioscience.com)