

## Data Sheet

### PD-1, Fc fusion, Avi-Tag

Human, recombinant, Fc fusion protein with C-terminal Avi-tag

**Catalog #:** 100406

**Lot #:** 190515

**Conc.:** 1.73 mg/ml

**Formulated in:** 8 mM Na Phosphate pH 7.4, 110 mM NaCl, 2.2 mM KCl and 20% glycerol.

**Stability:** At least 6 months at  $-80^{\circ}\text{C}$ . Avoid freeze/thaw cycles.

#### References:

1. Shinohara, T., *et al.*, *Genomics*. 1994 Oct;**23(3)**:704-6.
2. James, E.S., *et al.*, *Genes Immun*. 2005 Aug;**6(5)**:430-7.

**Description:** Human secreted programmed cell death 1 (PD-1), also known as PDCD1, SLEB2, CD279 and HPD-L, GenBank Accession No. NM\_005018, a.a 25-167, fused at the C-terminus to the Fc portion of human IgG1, with C-terminal Avi-tag™ expressed in a HEK293 cell expression system. MW = 44.5 kDa.

### Quality Assurance

#### 4-20% SDS-PAGE Coomassie staining

**Lane 1:**

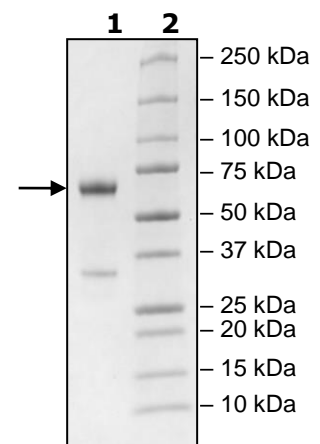
3 $\mu\text{g}$  PD-1

**Lane 2:**

Protein Marker

**MW:** 44.5 kDa

**Purity:**  $\geq 85\%$



OUR PRODUCTS ARE FOR RESEARCH USE ONLY. NOT FOR DIAGNOSTIC OR THERAPEUTIC USE.

To place your order, please contact us by Phone **1.858.202.1401** Fax **1.858.481.8694**

Or you can Email us at: [info@bpsbioscience.com](mailto:info@bpsbioscience.com)

Please visit our website at: [www.bpsbioscience.com](http://www.bpsbioscience.com)