

Data Sheet

NKG2D, Avi-Tag, Fc fusion, Biotin-labeled

Human, recombinant, N-terminal Avi-Fc-Tag,
Biotin-labeled

Catalog #: 100313

Lot #: 190320

Conc.: 1.52 mg/ml

Formulation: 8 mM Phosphate, pH 7.4, 110 mM NaCl, 2.2 mM KCl, and 20% glycerol

Stability: Stable for at least 12 months at -80°C. Avoid freeze/thaw cycles.

References:

1. Bauer, S, *et al.*, *Science*. 1999. Jul; **285(5428):727-729.**
2. Wu, J., *et al.*, *Science*. 1999. Jul; **285(5428): 730-732**

Description: Human NKG2d, also known as, Killer Cell Lectin Like Receptor K1, KLRK1, and NK Cell Receptor D, GenBank Accession No. NM_007360.4, a.a. 78-216, with an N-terminal Avi-Tag™ fused to the Fc portion of human IgG1, and expressed in a HEK293 cell expression system. This protein is enzymatically biotinylated using Avi-Tag technology. Biotinylation is confirmed to be ≥90%. MW=44 kDa.

Quality Assurance

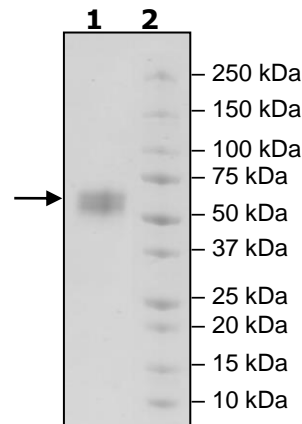
4-20% SDS-PAGE Coomassie staining

Lane 1:
4µg NKG2D

Lane 2:
Protein Marker

MW: 44 kDa

Purity: ≥90%



OUR PRODUCTS ARE FOR RESEARCH USE ONLY. NOT FOR DIAGNOSTIC OR THERAPEUTIC USE.

To place your order, please contact us by Phone **1.858.202.1401** Fax **1.858.481.8694**

Or you can Email us at: info@bpsbioscience.com

Please visit our website at: www.bpsbioscience.com



6042 Cornerstone Court W, Ste B
San Diego, CA 92121
Tel: 1.858.202.1401
Fax: 1.858.481.8694
Email: info@bpsbioscience.com

OUR PRODUCTS ARE FOR RESEARCH USE ONLY. NOT FOR DIAGNOSTIC OR THERAPEUTIC USE.

To place your order, please contact us by Phone **1.858.202.1401** Fax **1.858.481.8694**
Or you can Email us at: [**info@bpsbioscience.com**](mailto:info@bpsbioscience.com)
Please visit our website at: [**www.bpsbioscience.com**](http://www.bpsbioscience.com)