

## Data Sheet

### LILRA1, Avi-His Tag

Human, Recombinant, Avi-His Tag

**Catalog #:** 100245

**Lot #:** 181211-2

**Conc.:** 1.46 mg/ml

**Formulated in:** 8mM phosphate, pH 7.4,  
110mM NaCl, 2.2mM KCl, and 20% glycerol.

**Stability:** At least 6 months at  $-80^{\circ}\text{C}$ . Avoid  
freeze/thaw cycles.

**Description:** Human LILRA1, also known as CD85I, LIR-6, and leukocyte immunoglobulin like receptor A1. GenBank Accession No. NM\_006863, a.a. 17-461, with a C-terminal Avi-tag™, expressed in an HEK293 cell expression system. MW = 51 kDa. This protein runs at a higher molecular weight due to glycosylation.

#### References:

1. Brown, D. *et al.*, *HLA*. 2004; **64(3)**: 215-225.
2. Burshtyn, D. N., *et al.*, *The Journal of Immunology*. 2016; **196(3)**: 947-955.

### Quality Assurance

#### 4-20% SDS-PAGE Coomassie staining

**Lane 1:**

4  $\mu\text{g}$  LILRB1

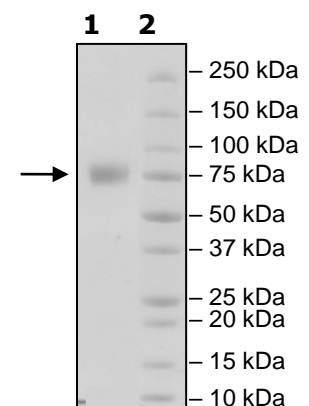
**Lane 2:**

Protein Marker

**MW:**

51 kDa+glycans

**Purity:**  $\geq 90\%$



OUR PRODUCTS ARE FOR RESEARCH USE ONLY. NOT FOR DIAGNOSTIC OR THERAPEUTIC USE.

To place your order, please contact us by Phone **1.858.202.1401** Fax **1.858.481.8694**

Or you can Email us at: [info@bpsbioscience.com](mailto:info@bpsbioscience.com)

Please visit our website at: [www.bpsbioscience.com](http://www.bpsbioscience.com)