

Data Sheet

LILRB2, Avi-His-Tag

Human, Recombinant, C-terminal Avi-His-Tag

Catalog #: 100234

Lot#: 181106

Conc.: 2.45 mg/ml

Formulated in: 8 mM phosphate, pH 7.4, 110 mM NaCl, 2.2 mM KCl, and 20% glycerol.

Stability: At least 6 months at -80°C . Avoid freeze/thaw cycles.

References:

1. Shiroishi, M., *et al.*, *PNAS*. Oct 2006;**103(44)**: 16412-16417.
2. Tachio, K., *et al.*, *Science*. Sep 2013; **341(6152)**: 1399-1404.

Description:

Human LILRB2, also known as Leukocyte immunoglobulin-like receptor subfamily B member 2, GenBank Accession No. NM_005874, a.a 22-458, with C-terminal Avi-His-TagTM, and expressed in a HEK293 cell expression system. MW = 52 kDa.

Quality Assurance

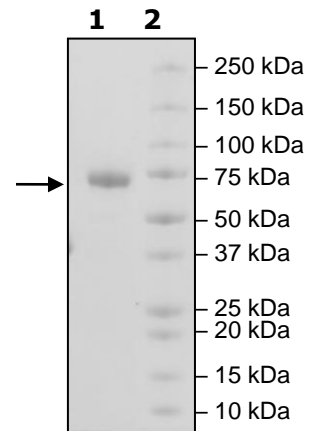
4-20% SDS-PAGE Coomassie staining

Lane 1:
4 μg LILRB2

Lane 2:
Protein Marker

MW: 52 kDa

Purity: $\geq 90\%$



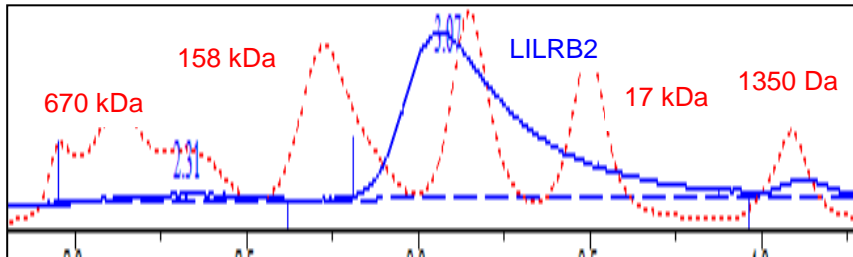
OUR PRODUCTS ARE FOR RESEARCH USE ONLY. NOT FOR DIAGNOSTIC OR THERAPEUTIC USE.

To place your order, please contact us by Phone **1.858.202.1401**. Fax **1.858.481.8694**

Or you can Email us at: info@bpsbioscience.com

Please visit our website at: www.bpsbioscience.com

Gel Filtration Curve



<10% aggregated

OUR PRODUCTS ARE FOR RESEARCH USE ONLY. NOT FOR DIAGNOSTIC OR THERAPEUTIC USE.

To place your order, please contact us by Phone **1.858.202.1401**. Fax **1.858.481.8694**
Or you can Email us at: info@bpsbioscience.com
Please visit our website at: www.bpsbioscience.com