

Data Sheet

Histone H3 (K27M), His-tag

Human, recombinant, N-terminal His-tag

Catalog #: 52101

Lot #: 150306

Conc.: 0.69 mg/ml

Formulated in: 8 mM PBS pH 7.4, 110 mM NaCl, 2.2 mM KCl and 20% glycerol

Stability: At least 6 months at -80°C . Avoid freeze/thaw cycles. Storing diluted protein is not recommended, if necessary, use carrier protein (BSA 0.1 – 0.5%).

References:

1. Loyola, A., *et al.*, *Mol. Cell.* 2006; **24(2)**: 309-316.
2. Khuong-Quang, D-A., *et al.*, *Acta Neuropathol.* 2012; 10.1007/s00401-012-0998-0.

Description: Human Histone 3 (HIST1H3E), GenBank Accession No. NM_003532, a.a. 2-136(end) with K27M mutation and N-terminal His-tag, MW = 16.2 kDa, expressed in an *E. coli* expression system.

Application: Useful as a substrate for methyltransferases or acetyltransferases and for screening inhibitors and selectivity profiling for drug discovery.

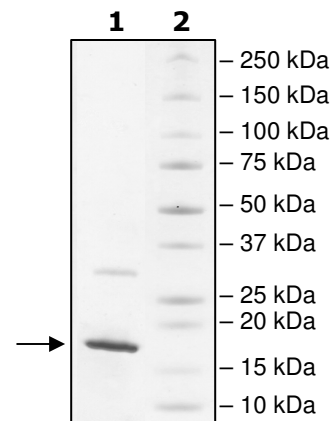
Quality Assurance

4-20% SDS-PAGE Coomassie staining

Lane 1:
2 μg Histone H3
(K27M)

Lane 2:
Protein Marker

MW: 16.2 kDa
Purity: $\geq 90\%$



OUR PRODUCTS ARE FOR RESEARCH USE ONLY. NOT FOR DIAGNOSTIC OR THERAPEUTIC USE.

To place your order, please contact us by Phone **1.858.829.3082** Fax **1.858.481.8694**

Or you can Email us at: info@bpsbioscience.com

Please visit our website at: www.bpsbioscience.com



6044 Cornerstone Court West, Suite E
San Diego, CA 92121
Tel: 1.858.829.3082
Fax: 1.858.481.8694
Email: info@bpsbioscience.com

Sequence

MHHHHHARTKQTARKSTGGKAPRKQLATKAARMSAPATGGVKKPHRYRPGTVAL
REIRRYQKSTELLIRKLPFQRLVREIAQDFKTDLRFQSSAVMALQEACEAYLVGLFEDT
NLCAIHAKRVTIMPKDIQLARRIGERA

Black: HistoneH3 (K28M, 2-136(end))

Blue: His-tag

Green: K27M

OUR PRODUCTS ARE FOR RESEARCH USE ONLY. NOT FOR DIAGNOSTIC OR THERAPEUTIC USE.

To place your order, please contact us by Phone **1.858.829.3082** Fax **1.858.481.8694**

Or you can Email us at: info@bpsbioscience.com

Please visit our website at: www.bpsbioscience.com