

Data Sheet

Histone H2A (Biotinylated)

Human, recombinant, N-terminal His-tag

Catalog #: 52036

Lot#: 130614 **Conc.:** 0.54 mg/ml

Formulated in: 8 mM PBS pH 7.4, 110 mM NaCl, 2.2 mM KCl, 20% glycerol and 3 mM DTT.

Stability: >6 months at -80 °C

References:

1. Osley, M.A. *Brief Funct. Genomic Proteomic* **5(3)**:179-89 (2006).
2. Wyrick, J.J. and Parra, M.A.. *Biochim Biophys Acta*. **1789(1)**:37-44 (2009).
3. Zhou, W., et al. *Int J Biochem Cell Biol*. **41(1)**:12-5 (2009).

Description:

Biotinylated Human Histone 2A, GenBank Accession No. NM_033445, a.a. 2-130(end) with N-terminal His-tag and C-terminal Cys. MW = 15 kDa, expressed in an *E. coli* expression system.

Application:

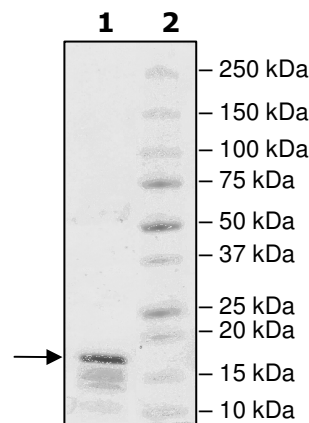
Useful for the study of enzyme kinetics, screening inhibitors, and selectivity profiling.

Quality Assurance

4-20% SDS-PAGE **Coomassie staining**

Lane 1:
2 µg Histone
H2A+Cys
Lane 2:
Protein Marker

MW: 15 kDa
Purity: ≥56%



OUR PRODUCTS ARE FOR RESEARCH USE ONLY. NOT FOR DIAGNOSTIC OR THERAPEUTIC USE.

To place your order, please contact us by Phone **1.858.829.3082**, Fax **1.858.481.8694**
Or you can Email us at: info@bpsbioscience.com
Please visit our website at: www.bpsbioscience.com



6044 Cornerstone Ct. West, Ste. E
San Diego, CA 92121
Tel: 1.858.829.3082
Fax: 1.858.481.8694
Email: info@bpsbioscience.com

Protein Sequence:

MHHHHHSGRGGKQGGKARAKAKSRSSRAGLQFPVGRVHRLLRKGNYSERVGAGAPV
YLAHVLEYLTAEILELAGNAARDNKKTRIIPRHLQLAIRNDEELNKLLGRVTIAQGGVLPNI
QAVLLPKKTESHHKAKGKC

OUR PRODUCTS ARE FOR RESEARCH USE ONLY. NOT FOR DIAGNOSTIC OR THERAPEUTIC USE.

To place your order, please contact us by Phone **1.858.829.3082**, Fax **1.858.481.8694**
Or you can Email us at: info@bpsbioscience.com
Please visit our website at: www.bpsbioscience.com