

Data Sheet

SUV39H1, GST-tag

Human, recombinant, N-terminal GST tag

Catalog #: 51070

Lot #: 140114-G

Conc.: 0.20 mg/ml

Formulated in: 40 mM Tris-HCl, pH 8.0, 110 mM NaCl, 2.2 mM KCl, 0.04% Tween-20, 20% glycerol, and 3 mM DTT.

Stability: At least 6 months at -80°C . Avoid freeze/thaw cycles. Storing diluted enzyme is not recommended, if necessary, use carrier protein (BSA 0.1 – 0.5%).

References:

1. Kang, M.Y. *et al.*, *Int. J. Cancer* **121** (10), 2192-2197 (2007).
2. Spensberger, D. and Delwel, R. *FEBS Lett.* **582** (18), 2761-2767 (2008).

Description: Human SUV39H1 (GenBank Accession No. NM_003173), amino acids 82-412, with N-terminal GST tag, MW= 64 kDa, expressed in *E. coli*.

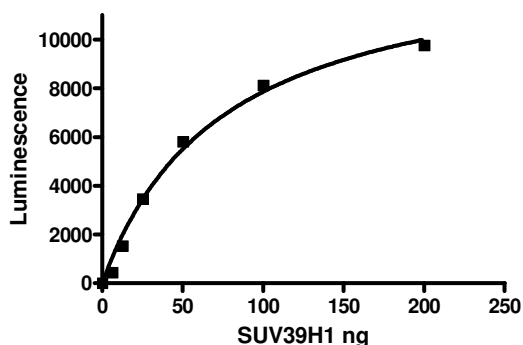
Specific Activity: 2.4 pmol/min/ μg .

Assay conditions: 50 μl reaction mix (50 mM TRIS pH 8.8, 5mM MgCl₂, 4mM DTT, 0.05% Tween-20, 2.5 μM S-adenosylmethionine, and SUV39H1 (0 – 200 ng) add to the wells coated with the substrate on G bioscience Neutravidin black plate. Incubate for 1 hr. Add antibody against methylated K9 residue of histone H3, incubate 1 hr. Then, add secondary HRP-labeled antibody and incubate 30 min. Finally, add HRP chemiluminescent substrates and read luminescence.

Application: Useful for the study of enzyme kinetics, screening inhibitors, and selectivity profiling.

Quality Assurance

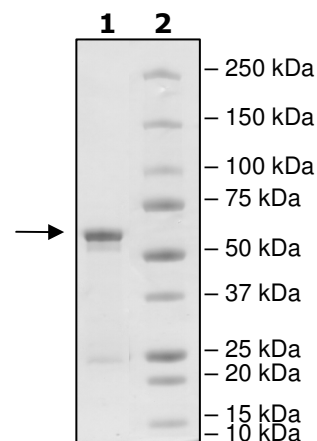
Specific Activity



**4-20% SDS-PAGE
Coomassie staining**

Lane 1:
2 μg SUV39H1
Lane 2:
Protein Marker

MW: 64.6 kDa
Purity: $\geq 78\%$



OUR PRODUCTS ARE FOR RESEARCH USE ONLY. NOT FOR DIAGNOSTIC OR THERAPEUTIC USE.

To place your order, please contact us by Phone **1.858.829.3082** Fax **1.858.481.8694**

Or you can Email us at: info@bpsbioscience.com

Please visit our website at: www.bpsbioscience.com