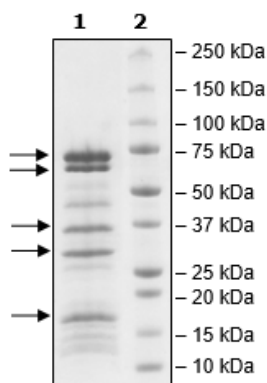


Product Information

Construct:	MLL1 (His-3745-3969(end)) / RbBP5 (His-2-538(end)) / Ash2L (His-2-534(end)) / WDR5 (FLAG-2-334(end)) / DPY30 (His-2-99(end))
Concentration:	0.97 mg/ml
Species:	Human
Formulated In:	40 mM Tris-HCl, pH 8.0, 110 mM NaCl, 2.2 mM KCl, 0.04% Tween20, 20% glycerol, variable imidazole, 1 mM TCEP, 1 μ M ZnCl ₂
Expression System:	<i>E. coli</i>
Format:	Aqueous buffer solution
Stability:	At least 6 months at -80°C. Avoid freeze/thaw cycles.
Storage:	-80°C
Genbank Accession:	MLL1: NM_005933; WDR5: NM_017588; Ash2L: NM_001105214; RbBP5: NM_005057; DPY30: NM_032574
MW:	MLL1: 27 kDa; WDR5: 37 kDa; Ash2L: 61 kDa; RbBP5: 60 kDa; DPY30: 12 kDa
Purity:	79%
Assay Conditions:	Assay run according to MLL1 Complex Chemiluminescent Assay Kit (BPS Bioscience #53008) with MLL1 complex titrated at various concentrations.
Applications:	Useful for the study of enzyme kinetics, screening inhibitors, and selectivity profiling.

Quality Control Data

4-20% SDS-Page Coomassie Staining



MLL1 Activity

