

Data Sheet

Metnase (SETMAR)

Human, recombinant, N-terminal FLAG-tag

Catalog #: 51018

Lot #: 110906

Conc.: 0.21 mg/ml

Formulated in: 40 mM Tris-HCl, pH 8.0,
 110 mM NaCl, 2.2 mM KCl, 80 µg/ml Flag
 peptide, 3 mM DTT, and 20% Glycerol.

Stability: >6 months at -80 °C

References:

1. Wray J. *et al.*, *Blood* **114(9)**, 1852-1858 (2009).
2. Williamson E.A. *et al.*, *Nucleic Acids Res.* **36 (18)**, 5822-5831 (2008).

Description:

Human Metnase (also known as SETMAR, or SET domain and mariner transposase fusion), GenBank Accession No. NM_006515, a.a. 27-684 (end), with N-terminal FLAG-tag, MW=76 kDa, expressed in FreeStyle 293-F cells.

Application:

Useful for the study of enzyme kinetics, screening inhibitors, and selectivity profiling.

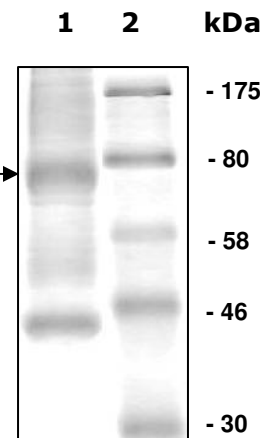
Quality Assurance

**10 % SDS-PAGE
 Coomassie staining**

Lane 1:
 3 µg Metnase

Lane 2:
 Protein Marker
 BioLabs (#P7708L)

MW: 76 kDa
Purity: ≥32%



OUR PRODUCTS ARE FOR RESEARCH USE ONLY. NOT FOR DIAGNOSTIC OR THERAPEUTIC USE.

To place your order, please contact us by Phone **1.858.829.3082** Fax **1.858.481.8694**

Or you can Email us at: info@bpsbioscience.com

Please visit our website at: www.bpsbioscience.com