

Data Sheet

EZH2 Y641H /EED/SUZ12/RbAp48/AEBP2

Human, recombinant
Catalog #: 51011
Lot #: 120611 **Conc.:** 0.35 mg/ml

Formulated in: 40 mM Tris-HCl, pH 8.0, 110 mM NaCl, 2.2 mM KCl, 200 mM imidazole, and 20% glycerol.

Stability: >6 months at -80°C

References:

1. Varambally, S. et al. Science 322 (5908), 1695-1699 (2008).
2. Rakotobe, D. et al., Virol. J. 5, 32 (2008).

Application Reference:

Morin, R.D., et al. Nat Genet. 2010 February; **42(2)**: 181-185.

Description:

Mutant version of our regular EZH2 5-member complex (Cat. # 51004), but with a Tyr-to-His mutation on a.a. 646 of the EZH2 protein. Complex of human EZH2 (GenBank Accession No. NM_004456), (a-a 2-end ; Y646H*) with N-terminal His tag, MW= 86 kDa, human EED (NM_003797) (a-a 2-end) with N-terminal Flag tag, MW= 51 kDa, human SUZ12 (NM_015355) (a-a 2-end) with N-terminal His tag, MW = 87 kDa, Human AEBP2 (NM_153207) (a-a 2-end) with N-terminal His tag, MW= 53 kDa, and human RbAp48 (NM_005610) (a-a 2-end) with N-terminal His tag, MW = 48 kDa, co-expressed in baculovirus expression system. *This mutation is often cited as Y641H in variant 3 (GenBank Accession No. NM_001203247).

Application:

Useful for the study of enzyme kinetics, screening inhibitors, and selectivity profiling.

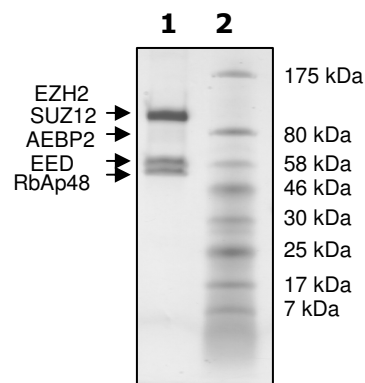
Quality Assurance

4-20% gradient SDS-PAGE
Coomassie staining

Lane 1:
5 µg enzyme complex

Lane 2:
Protein Marker

Purity: ≥ 91%



OUR PRODUCTS ARE FOR RESEARCH USE ONLY. NOT FOR DIAGNOSTIC OR THERAPEUTIC USE.

To place your order, please contact us by Phone **1.858.829.3082** Fax **1.858.481.8694**

Or you can Email us at: info@bpsbioscience.com

Please visit our website at: www.bpsbioscience.com