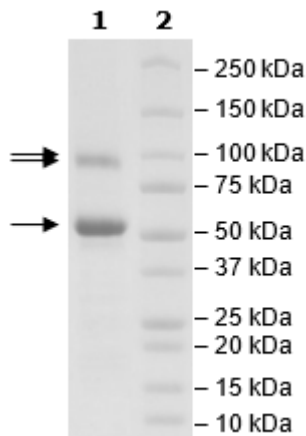


Product Information

Construct:	EZH1 (His-2-747(end)) / EED (FLAG-2-441(end)) / SUZ12 (His-2-739(end))
Concentration:	0.90 mg/ml
Species:	Human
Formulated In:	40 mM Tris-HCl pH 8.0, 110 mM NaCl, 2.2 mM KCl, 20% glycerol, 80 µg/ml FLAG peptide
Expression System:	Sf9
Format:	Aqueous buffer solution
Stability:	At least 6 months at -80°C. Avoid freeze/thaw cycles.
Storage:	-80°C
Genbank Accession:	EZH1: NM_001991; EED: NM_003797; SUZ12: NM_015355
MW:	EZH1: 86 kDa; EED: 51 kDa; SUZ12: 84 kDa
Purity:	≥90%
Specific Activity:	≥0.02 pmol/min/µg
Assay Conditions:	Assay was done in 1x HMT Assay Buffer 2A (BPS Bioscience #52170-A) with 2 µM H3, H4 histone substrate complex substrate and 40 µM S-adenosylmethionine with EZH1/EED/SUZ12 (BPS Bioscience #51006) titrated at various concentrations. After a 60 min reaction at room temperature, 10 µl of 1:1 mixture of diluted 1:250 Anti-rabbit AlphaLISA acceptor beads (PerkinElmer AL104C) and diluted 1:50 Primary Antibody 6 (Cat #52140F) was added and incubated 30 min at room temperature. 10 µl diluted 1:125 Nickel Chelate Donor Beads (PerkinElmer AS101D) was added and incubated for 60 min at room temperature. A- Counts were then read on Tecan microplate reader.
Applications:	Useful for the study of enzyme kinetics, screening inhibitors, and selectivity profiling.

Quality Control Data

4-20% SDS-Page Coomassie Staining



Specific Activity

