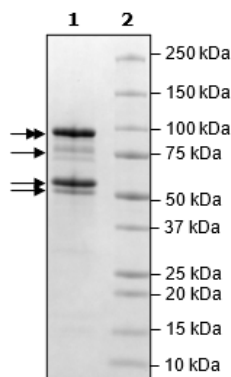


Product Information

Construct:	EZH2 (His-2-751(end)) / EED (FLAG-2-411(end)) / SUZ12 (His-2-739(end)) / RbAp48 (His-2-425(end)) / AEBP2 (His-2-503(end))
Concentration:	1.44 mg/ml
Species:	Human
Formulated In:	40 mM Tris-HCl pH 8.0, 110 mM NaCl, 2.2 mM KCl, 20% glycerol, 200 mM imidazole
Expression System:	Sf9
Format:	Aqueous buffer solution
Stability:	At least 6 months at -80°C. Avoid freeze/thaw cycles.
Storage:	-80°C
Genbank Accession:	EZH2: NM_004456; EED: NM_003797; SUZ12: NM_015355; RbAP48: NM_005610; AEBP2: NM_153207
MW:	EZH2: 87 kDa; EED: 51 kDa; SUZ12: 84 kDa; RbAp48: 49 kDa; AEBP2: 54 kDa
Purity:	≥90%
Assay Conditions:	Assay was performed using EZH2 Chemiluminescent Assay Kit (BPS Bioscience #52009L) with EZH2 titrated from 1000 ng/rxn – 15.625 ng/rxn.
Applications:	Useful for the study of enzyme kinetics, screening inhibitors, and selectivity profiling.

Quality Control Data

4-20% SDS-Page Coomassie Staining



EZH2/EED/SUZ12/RbAp48/AEBP2 Activity

