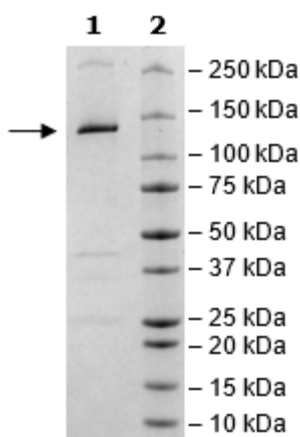


Product Information

Description:	Recombinant human EP300 (E1A binding protein p300), encompassing amino acids 965-1810. The construct contains an N-terminal His-tag (6xHis) followed by a GST-tag. The protein was affinity purified.
Species	Human
Construct:	p300 (His-GST-965-1810)
Concentration:	4.05 mg/ml
Expression System:	Sf9
Purity:	80%
Format:	Aqueous buffer solution.
Formulated In:	40 mM Tris-HCl, pH 8.0, 110 mM NaCl, 2.2 mM KCl, and 20% glycerol
MW:	125 kDa
Genbank Accession:	NM_001429
Stability:	At least 6 months at -80°C.
Storage:	-80°C
Instructions for Use:	Thaw on ice and gently mix prior to use. DO NOT VORTEX. Perform a quick spin before opening. Aliquot into small volumes and flash freeze for long term storage. Avoid multiple freeze/thaw cycles.
Assay Conditions:	Activity was measured using the P300 Chemiluminescent Assay Kit (BPS Bioscience #79705) with P300 titrated at various concentrations.
Applications:	Useful for the study of enzyme kinetics, screening inhibitors, and selectivity profiling.

Quality Control Data

4-20% SDS-PAGE Coomassie Staining



P300 Activity

